



OVER 60?

Secure this property
for up to **59% less!**

Price
£220,000

Freehold

2x  1x  1x 

**Shalmsford Street,
Chartham, Canterbury,
Kent, CT4**

Wards
Helping you move forwards



Main features

- Offered for sale with no onward chain
- Sought after village location
- Sunny, secluded low maintenance rear garden with storage shed
- Perfect for a first time buyer or investors alike, being turnkey ready
- Close to mainline train station

Accommodation

GROUND FLOOR

- Lounge: 13'0 x 10'0 (3.97m x 3.05m)
- Kitchen: 9'0 x 8'8 (2.75m x 2.64m)
- Bathroom: 10'11 x 3'0 (3.33m x 0.92m)

FIRST FLOOR

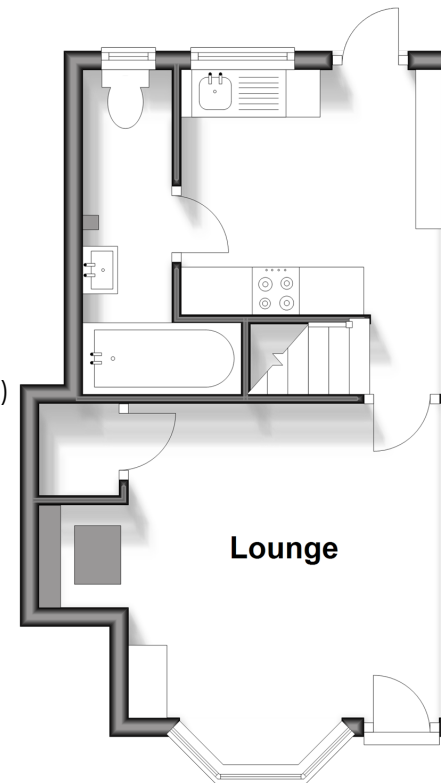
- Landing
- Bedroom 1: 12'3 x 8'2 (3.74m x 2.49m)
- Bedroom 2: 12'4 x 10'11 (3.76m x 3.33m)

OUTSIDE

- Front Garden
- Rear Garden

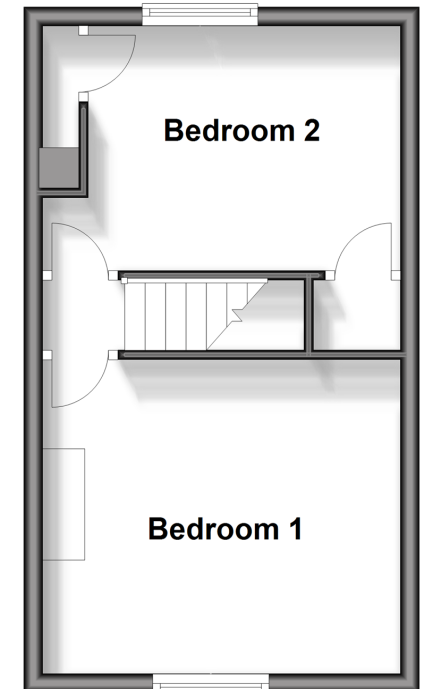
Ground Floor

Approx. 26.6 sq. metres (286.5 sq. feet)



First Floor

Approx. 25.9 sq. metres (278.9 sq. feet)



Call Canterbury - 01227 766669 ■ wardsof Kent.co.uk

- Legal advice should be taken to verify fixtures/fittings, planning, alterations and/or lease details
- Appliances & services are untested, dimensions are approximate and floor plans are not to scale
- Through a Homewise Home For Life Plan people aged 60+ can secure this property for up to 59% less, by purchasing a Lifetime Lease.



10348579/20241022/MW/MIA