



Price
£325,000

Freehold

3x  2x  1x 

**Dorman Avenue North,
Aylesham, Canterbury,
Kent, CT3**

OVER 60?

Secure this property
for up to **59% less!**

Wards
Helping you move forwards



Main features

- Set in a sought after village
- Garage with electric charging point and driveway
- Useful downstairs cloakroom and separate coat cupboard
- Good and outstanding ofsted rated schools nearby
- Light and bright kitchen/diner ideal for entertaining

Accommodation

GROUND FLOOR

Entrance Hallway

Lounge: 17'0 x 10'9 (5.19m x 3.28m)

Kitchen/Diner: 18'4 x 14'6 (5.59m x 4.42m)

Cloakroom

FIRST FLOOR

Landing

Bedroom 1: 15'10 x 11'10 (4.83m x 3.61m)

En Suite Shower Room: 8'3 x 6'4 (2.52m x 1.93m)

Bedroom 2: 11'0 x 9'6 (3.36m x 2.90m)

Bedroom 3: 7'6 x 7'2 (2.29m x 2.19m)

Bathroom: 6'10 x 6'1 (2.08m x 1.86m)

OUTSIDE

Front Garden

Rear Garden

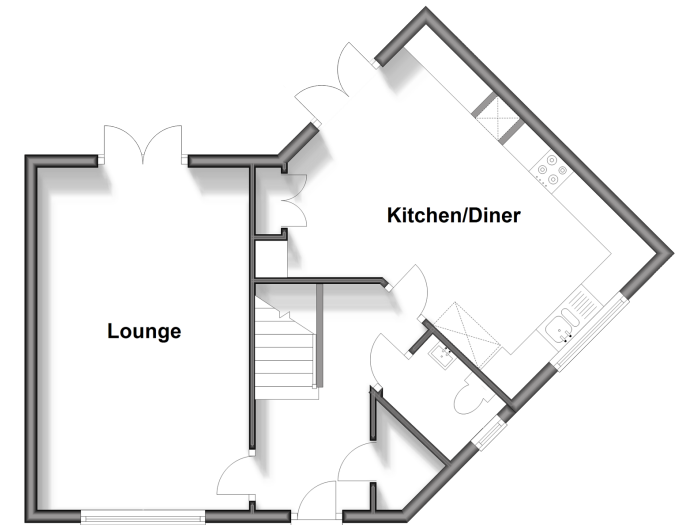
Driveway

Garage

Call Canterbury - 01227 766669 ■ wardsofkent.co.uk

- The seller is a person connected with Wards as defined in the Estate Agents Act 1979
- Legal advice should be taken to verify fixtures/fittings, planning, alterations and/or lease details
- Appliances & services are untested, dimensions are approximate and floor plans are not to scale
- Through a Homewise Home For Life Plan people aged 60+ can secure this property for up to 59% less, by purchasing a Lifetime Lease.

Ground Floor
Approx. 47.2 sq. metres (507.8 sq. feet)



First Floor
Approx. 47.5 sq. metres (511.8 sq. feet)



10348812/20240903/TG/JT