



Price
£325,000

Freehold

2x  1x  1x 

**Chaucer Close,
Canterbury, Kent, CT1**

Wards
Helping you move forwards



Main features

- Deceptively spacious semi detached bungalow
- Driveway and a garage
- Being sold with no onward chain
- Fantastic South Canterbury position close to bus route and walking distance to the city centre
- Beautiful private garden to enjoy throughout the year

Accommodation

SPLIT LEVEL GROUND FLOOR

Entrance Hallway

Lounge: 18'3 x 11'6 (5.57m x 3.51m)

Dining Area: 10'8 x 8'10 (3.25m x 2.69m)

Kitchen: 8'10 x 7'9 (2.69m x 2.36m)

Bedroom 1: 13'10 x 10'4 (4.22m x 3.15m)

Bedroom 2: 11'10 x 9'11 (3.61m x 3.02m)

Shower Room

OUTSIDE

Front Garden

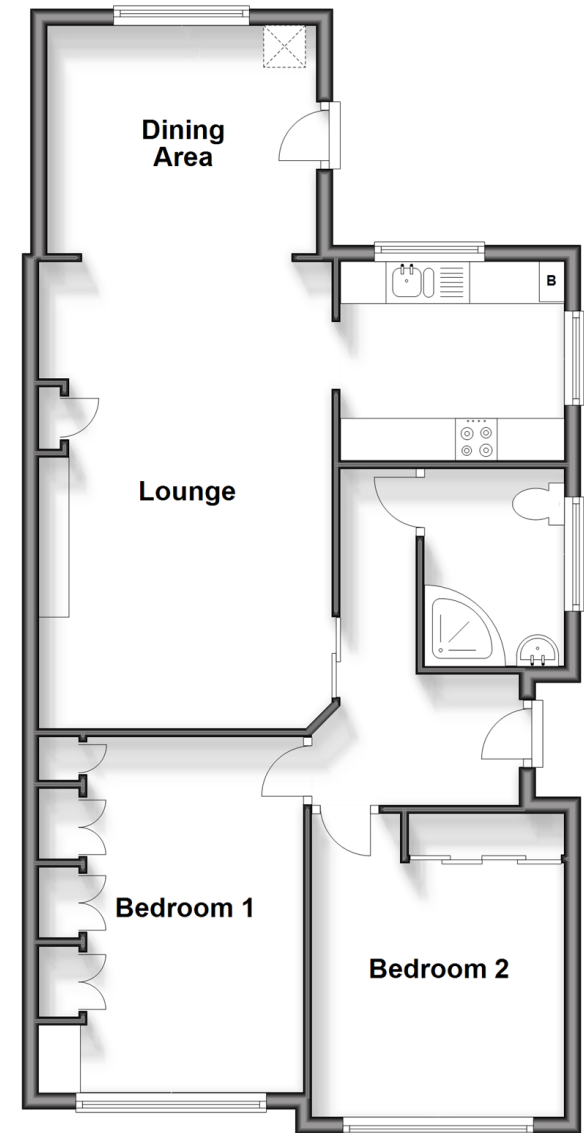
Driveway Parking

Garage: 16'3 x 8'2 (4.96m x 2.49m)

Rear Garden

Split Level Ground Floor

Approx. 71.2 sq. metres (766.5 sq. feet)



Call Canterbury - 01227 766669 ■ wardsokent.co.uk

- Legal advice should be taken to verify fixtures/fittings, planning, alterations and/or lease details
- Appliances & services are untested, dimensions are approximate and floor plans are not to scale



10348775/20240905/JT/JT