



Price

£250,000

Leasehold

2x  2x  1x 

Old Watling Street,
Canterbury, Kent, CT1

OVER 60?

Secure this property
for up to **59% less!**

Wards
Helping you move forwards



Main features

- Offered for sale with no onward chain
- Secure gated parking and elevator access
- Located within the city walls
- En suite to the main bedroom
- Well presented split level apartment perfect for a first time buyer or as an investment

Accommodation

THIRD FLOOR

Entrance Hallway

Lounge/Diner: 16'7 x 14'6 (5.06m x 4.42m)

Kitchen: 7'7 x 5'8 (2.31m x 1.73m)

Bedroom 1: 11'11 x 10'0 (3.63m x 3.05m)

En Suite Shower Room

Bedroom 2: 12'6 x 8'8 (3.81m x 2.64m)

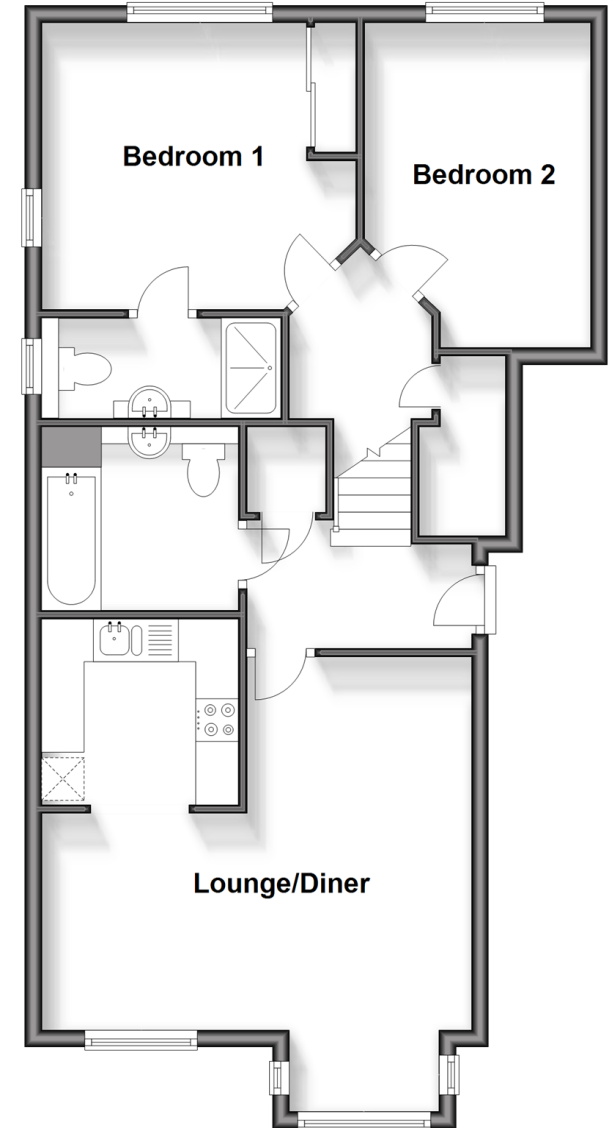
Bathroom

OUTSIDE

Allocated Parking Space

Split Level Third Floor

Approx. 67.7 sq. metres (728.4 sq. feet)



Call Canterbury - 01227 76669 ■ wardsof Kent.co.uk

- Legal advice should be taken to verify fixtures/fittings, planning, alterations and/or lease details
- Appliances & services are untested, dimensions are approximate and floor plans are not to scale
- Through a Homewise Home For Life Plan people aged 60+ can secure this property for up to 59% less, by purchasing a Lifetime Lease.



10348723/20241009/CB/MIA