



OVER 60?
Secure this property
for up to **59% less!**

Price
£375,000

Freehold

4x  2x  1x 

**Black Horse Lane,
Canterbury, Kent, CT3**

Wards
Helping you move forwards



Main features

- NHBC certificate
- Beautiful landscaped rear garden
- 2 allocated parking bays with an electric charging point
- Fantastic main bedroom with modern en-suite shower room and elevated views over the estuary
- Wonderful town house adaptable to suit your needs

Accommodation

GROUND FLOOR

Entrance Hallway
 Cloakroom: 6'0 x 3'0 (1.83m x 0.92m)
 Kitchen/Diner: 15'0 x 9'0 (4.58m x 2.75m)
 Lounge: 16'0 x 11'1 (4.88m x 3.38m)

FIRST FLOOR

Landing
 Bedroom 2: 15'0 x 8'1 (4.58m x 2.47m)
 Bedroom 3: 9'1 x 7'0 (2.77m x 2.14m)
 Bedroom 4: 11'0 x 9'0 (3.36m x 2.75m)
 Bathroom

SECOND FLOOR

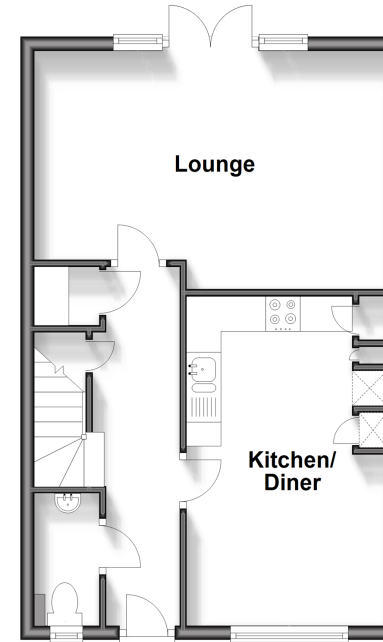
Landing
 Bedroom 1: 13'1 x 13'0 (3.99m x 3.97m)
 En-suite Shower Room: 7'1 x 5'0 (2.16m x 1.53m)

OUTSIDE

2 x Allocated Parking Spaces
 Rear Garden

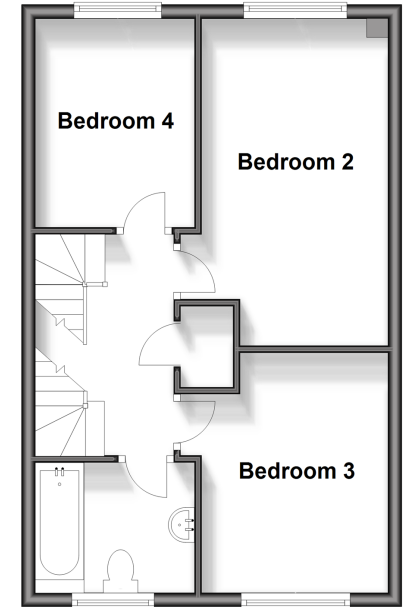
Ground Floor

Approx. 42.0 sq. metres (452.3 sq. feet)



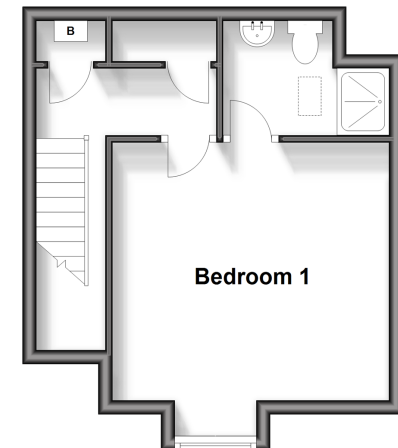
First Floor

Approx. 42.0 sq. metres (452.3 sq. feet)



Second Floor

Approx. 27.0 sq. metres (290.6 sq. feet)



Call Canterbury - 01227 766669 ■ wardsof Kent.co.uk

- Legal advice should be taken to verify fixtures/fittings, planning, alterations and/or lease details
- Appliances & services are untested, dimensions are approximate and floor plans are not to scale
- Through a Homewise Home For Life Plan people aged 60+ can secure this property for up to 59% less, by purchasing a Lifetime Lease.



10348736/20240924/MW/JT