

**OVER 60?**

Secure this property  
for up to **59% less!**



**FOR SALE**  
01227 766669

Could your dog be our next model? Applications with the chance of being featured!

**Price**

**£400,000**

**Freehold**

3x  1x  2x 

Bossingham, Canterbury, Kent, CT4

*Wards*

Helping you move forwards





## Main features

- Detached bungalow
- Driveway, garage and car port
- Being sold with no onward chain
- Located in a beautiful village with the Kent countryside within a short drive to Canterbury
- Potential to extend and develop (Subject to planning permission)

## Accommodation

### GROUND FLOOR

#### Entrance Hall

Lounge/Diner: 21'0 x 11'1 (6.41m x 3.38m)

Kitchen: 11'1 x 8'0 (3.38m x 2.44m)

Bathroom: 10'1 x 5'1 (3.08m x 1.55m)

Bedroom 3: 9'0 x 8'0 (2.75m x 2.44m)

Bedroom 2: 11'1 x 11'0 (3.38m x 3.36m)

Dining Room: 13'1 x 10'1 (3.99m x 3.08m)

Bedroom 1: 13'1 x 10'1 (3.99m x 3.08m)

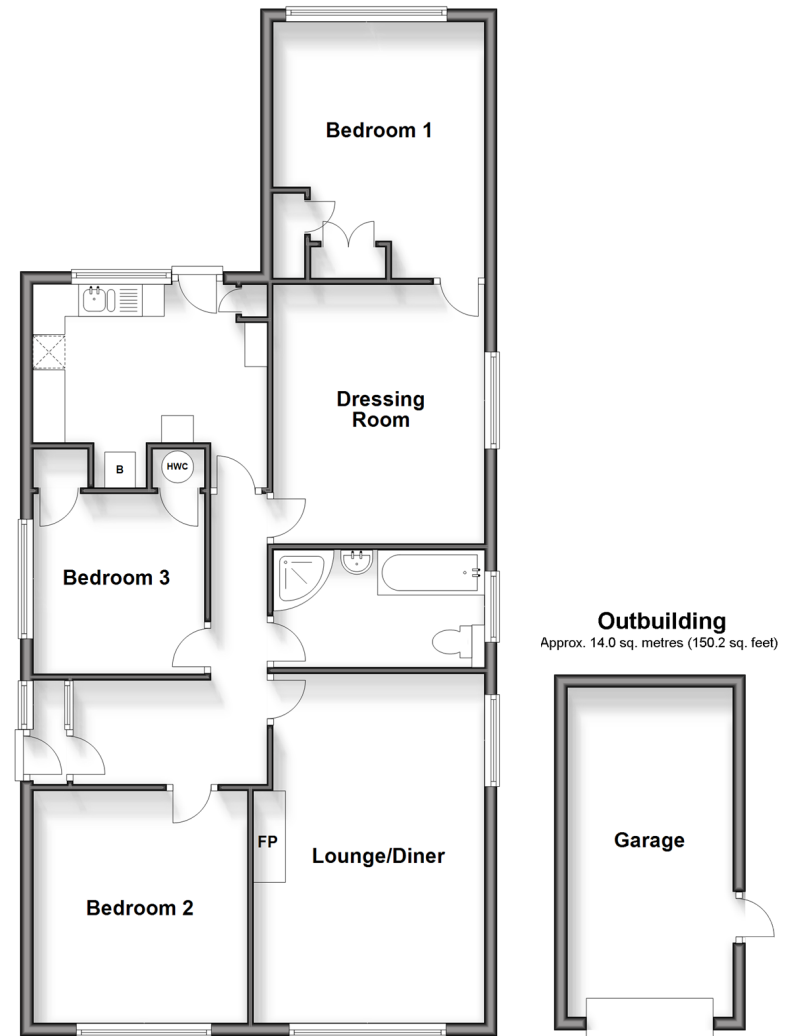
### OUTBUILDING

#### Garage

### OUTSIDE

- Lean-To
- Car Port
- Driveway
- Rear Garden

**Ground Floor**  
Approx. 95.3 sq. metres (1026.3 sq. feet)



**Call Canterbury - 01227 76669 ■ [wardsof Kent.co.uk](http://wardsof Kent.co.uk)**

- Legal advice should be taken to verify fixtures/fittings, planning, alterations and/or lease details
- Appliances & services are untested, dimensions are approximate and floor plans are not to scale
- Through a Homewise Home For Life Plan people aged 60+ can secure this property for up to 59% less, by purchasing a Lifetime Lease.



10348740/20240614/MB/JT