



**Price**  
**£500,000**

**Freehold**

3x  2x  2x 

Lavender Mews, Church  
Lane, Canterbury, Kent,  
CT1

**OVER 60?**

Secure this property  
for up to **59% less!**

*Wards*  
Helping you move forwards



## Main features

- No onward chain
- Decked area with views of the River Stour
- Allocated parking space on a private secluded road
- Positioned within the city walls just a short walk to the city centre
- Within walking distance of both train stations

## Accommodation

### GROUND FLOOR

- Entrance Hallway
- Kitchen/Diner: 14'5 x 7'7 (4.40m x 2.31m)
- Cloakroom
- Lounge: 14'7 x 12'4 (4.45m x 3.76m)
- Dining Room: 10'4 x 7'6 (3.15m x 2.29m)

### FIRST FLOOR

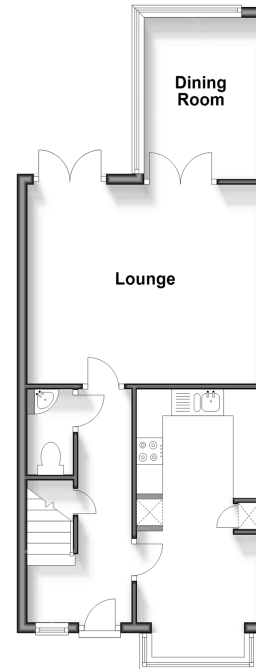
- Landing
- Bedroom 2: 12'7 x 12'4 (3.84m x 3.76m)
- Bathroom: 7'8 x 6'5 (2.34m x 1.96m)
- Bedroom 3: 7'8 x 7'7 (2.34m x 2.31m)

### SECOND FLOOR

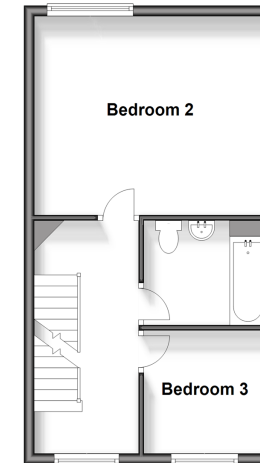
- Landing
- Bedroom 1: 13'7 x 11'2 (4.14m x 3.41m)
- Dressing Room: 5'5 x 5'1 (1.65m x 1.55m)
- En-Suite Shower Room: 9'3 x 5'5 (2.82m x 1.65m)

### OUTSIDE

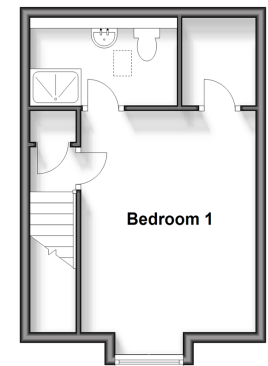
**Ground Floor**  
Approx. 44.6 sq. metres (479.7 sq. feet)



**First Floor**  
Approx. 37.0 sq. metres (398.3 sq. feet)



**Second Floor**  
Approx. 26.5 sq. metres (285.1 sq. feet)



Call Canterbury - 01227 766669 ■ [wardsofkent.co.uk](http://wardsofkent.co.uk)

- Legal advice should be taken to verify fixtures/fittings, planning, alterations and/or lease details
- Through a Homewise Home For Life Plan people aged 60+ can secure this property for up to 59% less, by purchasing a Lifetime Lease.

- Appliances & services are untested, dimensions are approximate and floor plans are not to scale



10348698/20240607/MB/MW