



Price

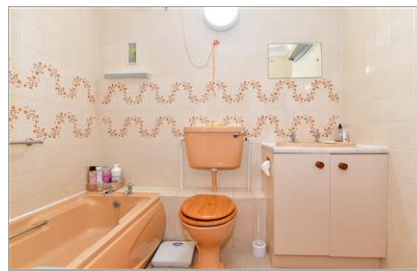
£60,000

Leasehold

1x  1x  1x 

**Homespire House,
Knotts Lane,
Canterbury, Kent, CT1**

Wards
Helping you move forwards



Main features

- **First floor retirement flat in a desirable location**
- **Central to the city centre and amenities**
- **No onward chain**
- **Lift access to all floors**
- **Secure parking to the rear of the building**

Accommodation

FIRST FLOOR

Entrance Hallway

Lounge: 16'7 x 10'2 (5.06m x 3.10m)

Kitchen: 7'9 x 5'3 (2.36m x 1.60m)

Bathroom

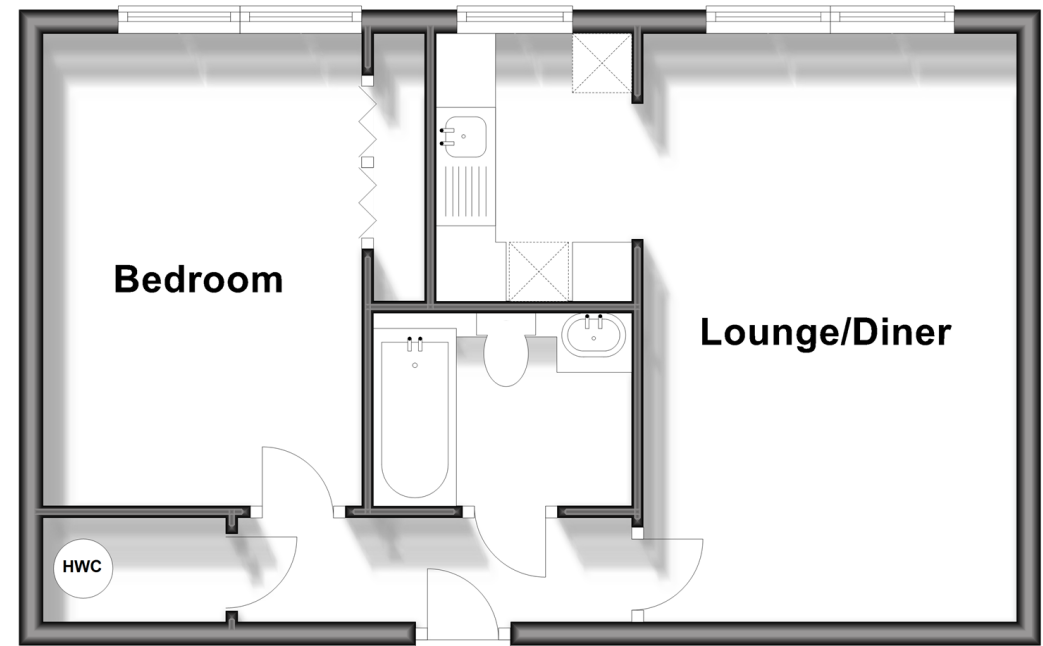
Bedroom : 13'5 x 8'7 (4.09m x 2.62m)

OUTSIDE

Residents Parking

First Floor

Approx. 40.9 sq. metres (439.7 sq. feet)



Call Canterbury - 01227 766669 ■ wardsofkent.co.uk

■ Legal advice should be taken to verify fixtures/fittings, planning, alterations and/or lease details

■ Appliances & services are untested, dimensions are approximate and floor plans are not to scale



10348441/20240521/AMY/MIA