



**Price**  
**£200,000**

**Freehold**

1x  1x  1x 

**Winder Place, Aylesham,  
Canterbury, Kent, CT3**

**OVER 60?**

Secure this property  
for up to **59% less!**

*Wards*  
Helping you move forwards



## Main features

- Sunny private rear garden with outside storage
- Close to direct public transport links to Canterbury and further afield
- Allocated parking for 1 car
- Perfect to move straight into with integrated kitchen appliances
- Walking distance to local amenities including a doctors surgery

## Accommodation

### FIRST FLOOR

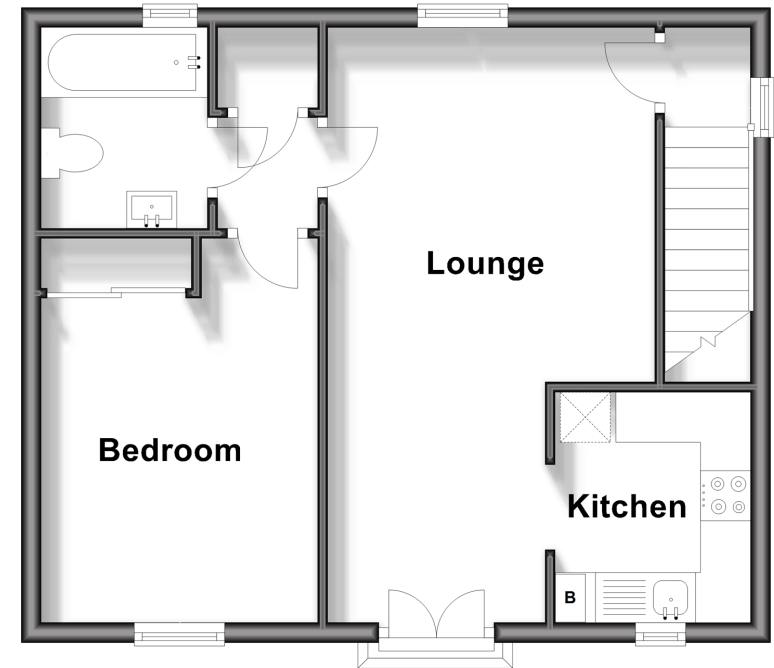
Entrance Hallway  
 Lounge: 19'6 x 10'9 (5.95m x 3.28m)  
 Kitchen: 7'4 x 6'4 (2.24m x 1.93m)  
 Bathroom  
 Bedroom: 12'7 x 9'4 (3.84m x 2.85m)

### OUTSIDE

Rear Garden  
 Allocated Parking x 1

## First Floor

Approx. 42.1 sq. metres (453.0 sq. feet)



Call Canterbury - 01227 766669 ■ [wardsofkent.co.uk](http://wardsofkent.co.uk)

■ Legal advice should be taken to verify fixtures/fittings, planning, alterations and/or lease details  
 ■ Through a Homewise Home For Life Plan people aged 60+ can secure this property for up to 59% less, by purchasing a Lifetime Lease.

■ Appliances & services are untested, dimensions are approximate and floor plans are not to scale



10348400/20240927/MW/MW