



Price
£550,000

Freehold

4x  2x  3x 

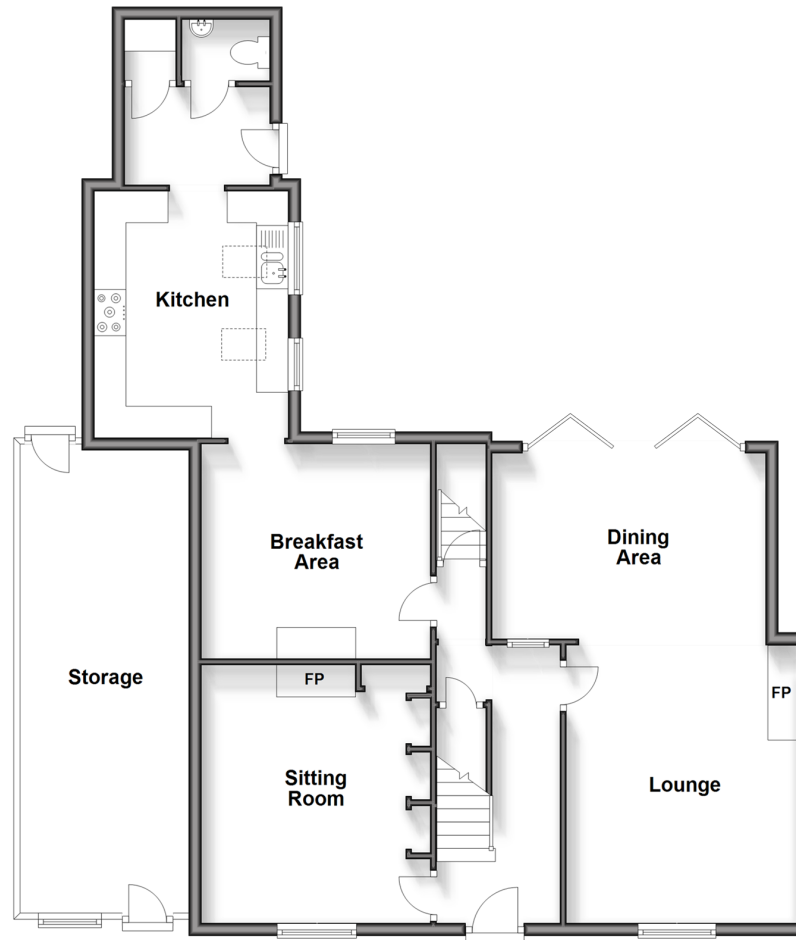
**Chequer Lane, Ash,
Canterbury, Kent, CT3**

OVER 60?

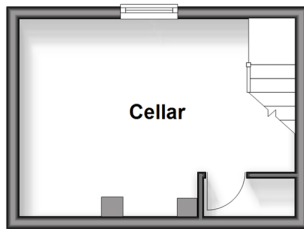
Secure this property
for up to **59% less!**

Wards
Helping you move forwards

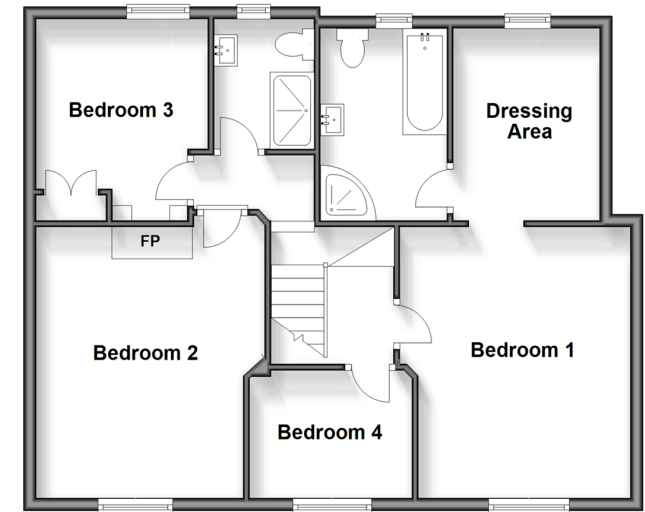
Ground Floor
Approx. 87.7 sq. metres (943.8 sq. feet)



Basement
Approx. 13.7 sq. metres (147.2 sq. feet)



Split Level First Floor
Approx. 69.3 sq. metres (745.5 sq. feet)



Accommodation

GROUND FLOOR

Entrance Hallway
Sitting Room: 13'10 x 12'0 (4.22m x 3.66m)
Lounge: 14'0 x 12'0 (4.27m x 3.66m)
Dining Area: 14'0 x 11'0 (4.27m x 3.36m)
Breakfast Area: 12'0 x 11'3 (3.66m x 3.43m)
Kitchen: 12'11 x 9'9 (3.94m x 2.97m)
Utility Room: 9'9 x 5'0 (2.97m x 1.53m)
Cloakroom

BASEMENT

Cellar: 12'0 x 10'1 (3.66m x 3.08m)

FIRST FLOOR

Landing
Bedroom 1: 13'10 x 12'0 (4.22m x 3.66m)
Dressing Area: 11'3 x 7'1 (3.43m x 2.16m)
En Suite Bathroom
Bedroom 2: 14'11 x 12'0 (4.55m x 3.66m)
Bedroom 3: 10'3 x 8'7 (3.13m x 2.62m)
Bedroom 4: 8'2 x 6'4 (2.49m x 1.93m)
Shower Room

OUTSIDE

Front Garden
Off Road Parking
Rear Garden



Main features

- Driveway for 2 cars
- Beautiful Georgian home with lots of history to the property
- Private and sunny rear garden
- Set in the village of Ash, walking distance to local amenities and good public transport links
- Original features including high ceilings and skylights in the kitchen



Nearest Schools

Primary Schools: Cartwright and Kelsey C of E Primary 0.2 miles, Preston Primary 2.5 miles, Eastry C of E Primary 2.6 miles
Secondary Schools: Spires Academy 6.0 miles, Simon Langton Girls' Grammar School 7.9 miles



Transport Information

Train Stations: Adisham 4.4 miles, Bekesbourne 4.4 miles, Aylesham 5.0 miles



Address

Chequer Lane, Ash, Canterbury, Kent, CT3



Directions

For directions to this property please contact us.



Wards
Helping you move forwards

Call Canterbury Branch 01227 766669 ■ wardsof Kent.co.uk



- Legal advice should be taken to verify fixtures/fittings, planning, alterations and/or lease details
- Appliances & services are untested, dimensions are approximate and floor plans are not to scale
- Through a Homewise Home For Life Plan people aged 60+ can secure this property for up to 59% less, by purchasing a Lifetime Lease.

EPC RATING

CURRENT: D(60) POTENTIAL: C(74)

10348252/20240109/MW/MW