



Guide Price
£375,000

Freehold

3x  1x  1x 

**Hildersham Close,
Broadstairs, Kent, CT10**

OVER 60?

Secure this property
for up to **59% less!**

Wards
Helping you move forwards



Main features

- Being sold with no onward chain
- Ideal family home
- Generous corner plot
- Off road parking and garage
- Sought after location close to schools, shops and transport links

Accommodation

GROUND FLOOR

Hallway
Cloakroom
Lounge/Dining area: 25'1 x 18'11 (7.65m x 5.77m)
Kitchen: 12'2 x 8'3 (3.71m x 2.52m)

FIRST FLOOR

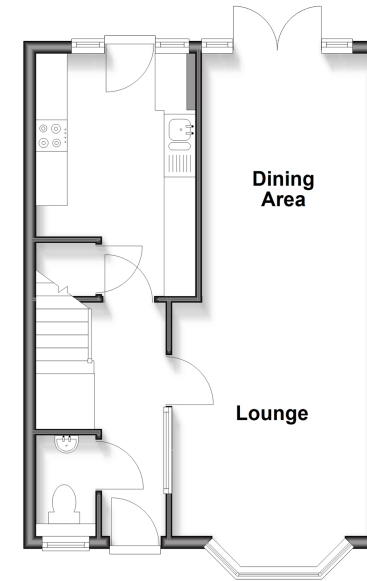
Landing
Bedroom 1 : 12'2 x 10'3 (3.71m x 3.13m)
Bedroom 2 : 12'9 x 9'6 (3.89m x 2.90m)
Bedroom 3 : 10'0 x 7'5 (3.05m x 2.26m)
Bathroom : 6'9 x 5'6 (2.06m x 1.68m)

OUTSIDE

Garage
Rear Garden

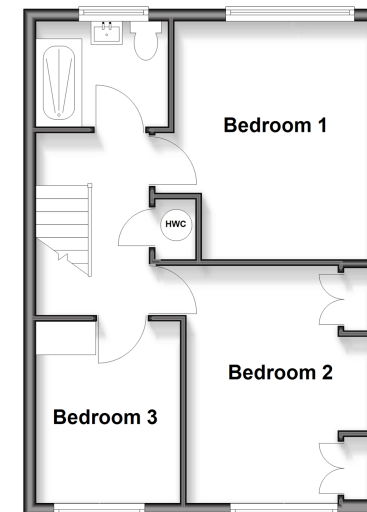
Ground Floor

Approx. 41.1 sq. metres (442.7 sq. feet)



First Floor

Approx. 40.8 sq. metres (439.6 sq. feet)



Call Broadstairs - 01843 602546 ■ wardsofkent.co.uk

- Legal advice should be taken to verify fixtures/fittings, planning, alterations and/or lease details
- Appliances & services are untested, dimensions are approximate and floor plans are not to scale
- Through a Homewise Home For Life Plan people aged 60+ can secure this property for up to 50% less, by purchasing a Lifetime Lease.



10229592/20251023/LM/BW