



Price

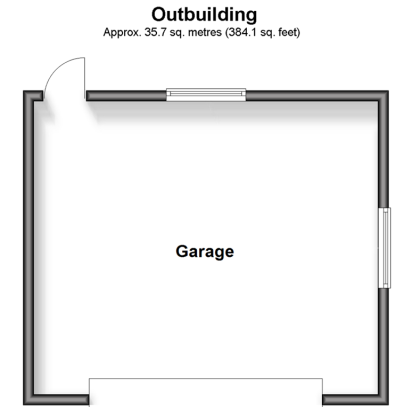
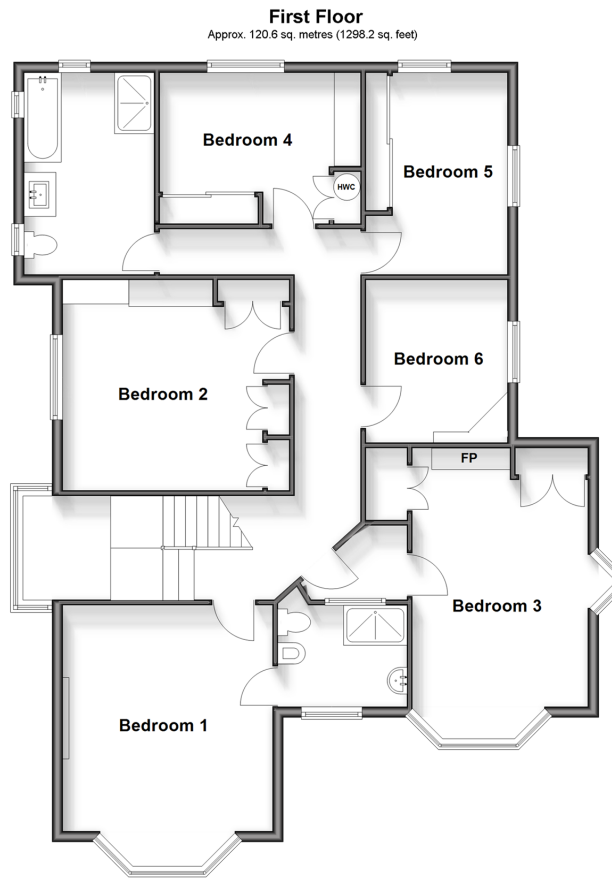
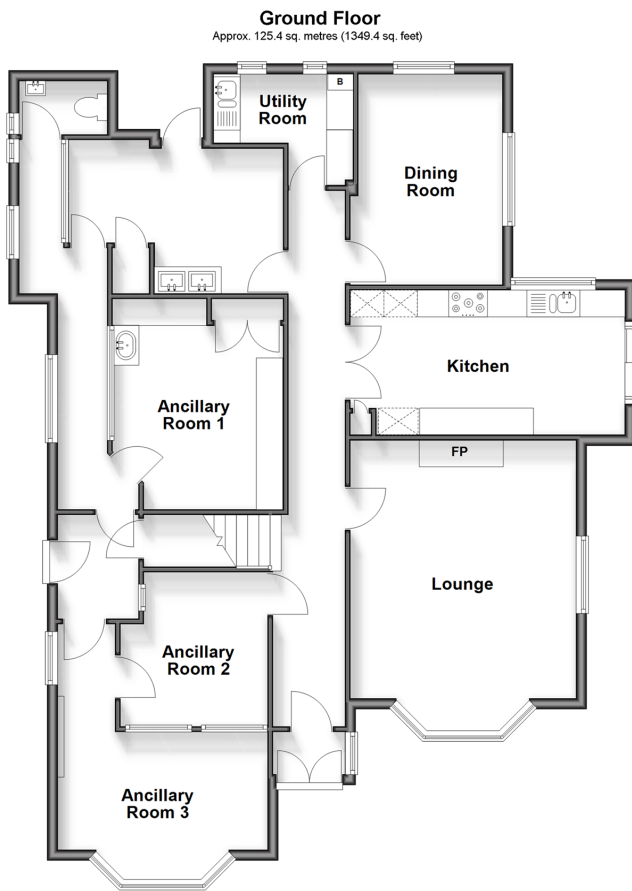
£875,000

Freehold

6x  2x  2x 

**Osborne Road,
Broadstairs, Kent, CT10**

Wards
Helping you move forwards



Accommodation

GROUND FLOOR

Entrance Porch
Hallway
Lounge : 16'8 x 14'0 (5.08m x 4.27m)
Kitchen : 16'9 x 8'8 (5.11m x 2.64m)
Dining Room : 12'9 x 9'3 (3.89m x 2.82m)
Utility Room : 8'6 x 4'1 (2.59m x 1.25m)
Ancillary Room: 9'4 x 8'9 (2.85m x 2.67m)
Ancillary Room: 12'9 x 9'2 (3.89m x 2.80m)
Side Entrance Lobby
Ancillary Room 1: 11'3 x 10'5 (3.43m x 3.18m)
Toilet
Ancillary Room 2: 13'2 x 8'9 (4.02m x 2.67m)

FIRST FLOOR

Split landing
Bedroom 1: 16'1 x 12'8 (4.91m x 3.86m)
En suite shower room
Bedroom 2: 16'3 x 10'8 (4.96m x 3.25m)
Bedroom 3: 13'9 x 11'3 (4.19m x 3.43m)
Bedroom 4: 12'9 x 8'7 (3.89m x 2.62m)
Bedroom 5: 10'7 x 9'7 (3.23m x 2.92m)
Bedroom 6: 9'4 x 8'1 (2.85m x 2.47m)
Family bathroom

OUTSIDE

Front Garden
Rear Garden
Garage
Gated Driveway



Main features

- Chain free
- Detached property with scope to extend or convert STPP
- Detached garage and off road Chain free
- Detached property with scope to extend or convert STPP
- Detached garage and off-road parking
- Large corner plot with sunny garden



Nearest Schools

Primary Schools: Upton Junior School 0.4 miles, St Joseph's Catholic Primary, Broadstairs 0.5 miles, Bromstone Primary, Broadstairs 0.9 miles

Secondary Schools: The Hereson School 0.4 miles, The



Transport Information

Train Stations: Broadstairs 0.3 miles, Dumpton Park 1.0 miles, Ramsgate 2.3 miles



Address

Osborne Road, Broadstairs, Kent, CT10



Directions

For directions to this property please contact us.



Wards
Helping you move forwards

Call Broadstairs Branch 01843 602546 ■ wardsofkent.co.uk



■ Legal advice should be taken to verify fixtures/fittings, planning, alterations and/or lease details ■ Appliances & services are untested, dimensions are approximate and floor plans are not to scale



16003012/20250412/EB/ATN