



**Price**  
**£800,000**

**Freehold**

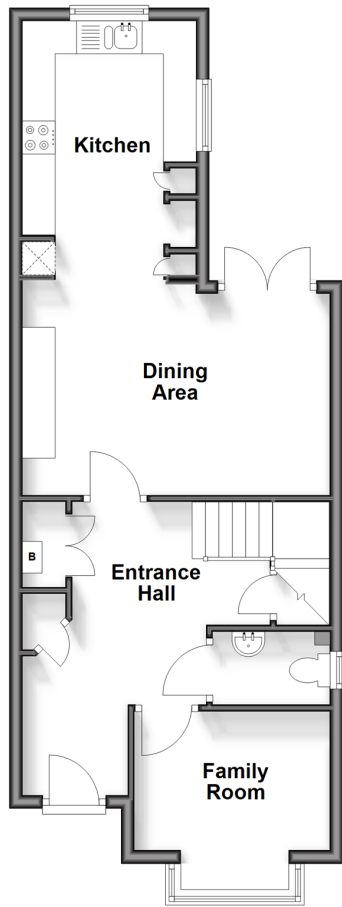
4x  2x  2x 

**Dickens Road,  
Broadstairs, Kent, CT10**

*Wards*  
Helping you move forwards

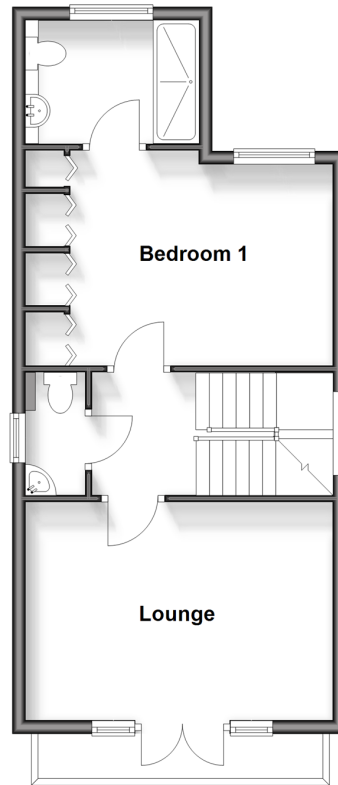
## Ground Floor

Approx. 49.5 sq. metres (532.3 sq. feet)



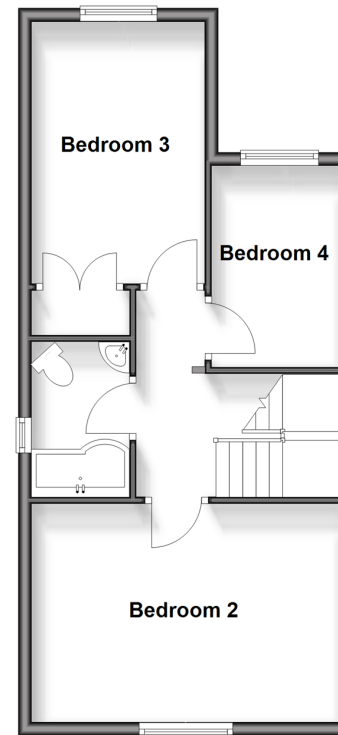
## First Floor

Approx. 45.2 sq. metres (487.0 sq. feet)



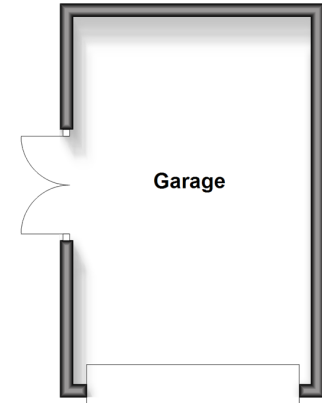
## Second Floor

Approx. 45.2 sq. metres (487.0 sq. feet)



## Outbuilding

Approx. 20.2 sq. metres (217.1 sq. feet)



## Accommodation

### GROUND FLOOR

Entrance Hall  
 Snug : 9'9 x 8'4 (2.97m x 2.54m)  
 Kitchen/ Diner : 23'2 x 15'3 (7.07m x 4.65m)  
 Family room

### LANDING

Lounge: 15'3 x 10'9 (4.65m x 3.28m)  
 w/c  
 Bedroom 1: 13'4 x 10'8 (4.07m x 3.25m)  
 en-suite

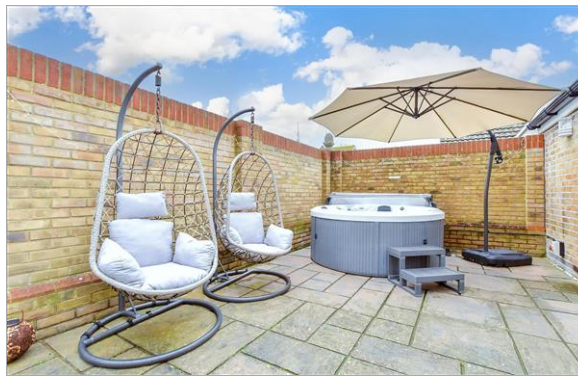
### LANDING

Bathroom  
 Bedroom 2: 15'3 x 10'8 (4.65m x 3.25m)  
 Bedroom 3: 13'1 x 8'10 (3.99m x 2.69m)  
 Bedroom 4: 9'11 x 6'4 (3.02m x 1.93m)

### OUTSIDE

Garden  
 Garage: 18'4 x 11'11 (5.59m x 3.63m)  
 Off road parking





## Main features

- Being sold Chain Free
- Currently used as a successful holiday let
- Prime Broadstairs location
- Garage and off Road parking for 2 cars
- Being sold fully furnished



### Nearest Schools

Primary Schools: St Joseph's Catholic Primary, Broadstairs 0.6 miles, Upton Junior School 0.6 miles, St Peter-in-Thamet CofE Junior School 0.8 miles

Secondary Schools: Stone Bay School 0.3 miles, The



### Transport Information

Train Stations: Broadstairs 0.4 miles, Dumpton Park 1.3 miles, Ramsgate 2.1 miles



### Address

Dickens Road, Broadstairs, Kent, CT10



### Directions

For directions to this property please contact us.





*Wards*  
Helping you move forwards

Call Broadstairs Branch 01843 602546 ■ [wardsofkent.co.uk](https://wardsofkent.co.uk)



■ Legal advice should be taken to verify fixtures/fittings, planning, alterations and/or lease details ■ Appliances & services are untested, dimensions are approximate and floor plans are not to scale



10229543/20250304/ATN/ATN