



Price
£600,000

Freehold

5x  2x  2x 

**Gladstone Road,
Broadstairs, Kent, CT10**

Wards
Helping you move forwards



Main features

- Built in 1890 is this impressive semi-detached home
- Period features throughout
- Located within a five minute walk of two 'Outstanding Primary Schools'
- Ready to move into no work required, 18 solar panels included
- Scope to create off road parking

Accommodation

GROUND FLOOR

Entrance Hall

Hallway

Lounge: 21'4 x 13'7 (6.51m x 4.14m)

Family Area & Sitting Area: 13'3 x 8'1 (4.04m x 2.47m) plus 10'2 x 8'1 (3.10m x 2.47m)

Downstairs Toilet

Kitchen/Diner : 23'9 x 13'3 (7.24m x 4.04m)

Cloakroom: 5'3 x 3'6 (1.60m x 1.07m)

FIRST FLOOR

Landing

Bathroom

Bedroom 1: 13'1 x 11'2 (3.99m x 3.41m)

Bedroom 2: 24'6 x 7'9 (7.47m x 2.36m)

Bedroom 3: 15'9 x 10'4 (4.80m x 3.15m)

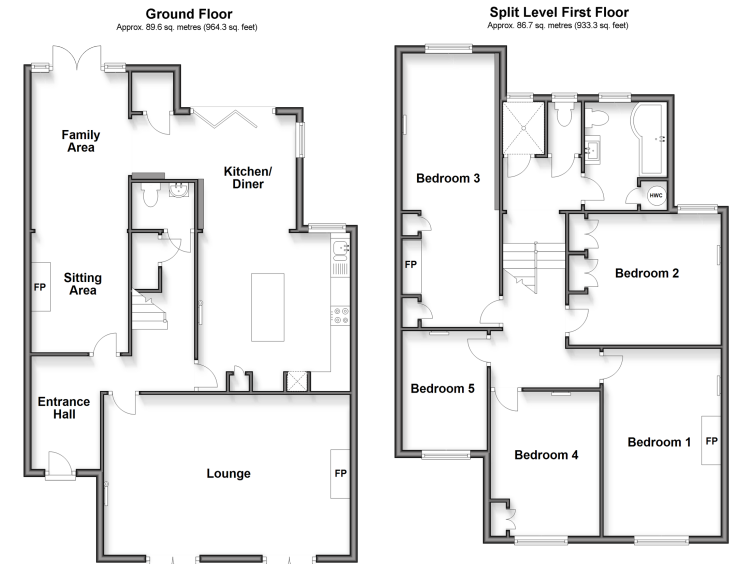
Bedroom 4: 12'8 x 9'4 (3.86m x 2.85m)

Bedroom 5: 9'9 x 6'7 (2.97m x 2.01m)

OUTSIDE

Front Garden

Rear Garden



Call Broadstairs - 01843 602546 ■ wardsof Kent.co.uk

■ Legal advice should be taken to verify fixtures/fittings, planning, alterations and/or lease details

■ Appliances & services are untested, dimensions are approximate and floor plans are not to scale



10229471/20250322/TB/BW