



Guide Price
£575,000

Freehold

4x  1x  2x 

**St. Peter's Court,
Broadstairs, Kent, CT10**

Wards
Helping you move forwards



Main features

- Immaculately presented throughout
- Garage and off road parking for multiple vehicles
- Sunny aspect front and rear garden
- Generous sized utility room
- High spec kitchen with built in appliances

Accommodation

GROUND FLOOR

Entrance Hall
 Lounge: 16'8 x 16'8 (5.08m x 5.08m)
 Sitting room : 11'5 x 10'0 (3.48m x 3.05m)
 Cloakroom
 Kitchen/Diner: 21'7 x 8'9 (6.58m x 2.67m)
 Utility Room: 11'4 x 11'3 (3.46m x 3.43m)

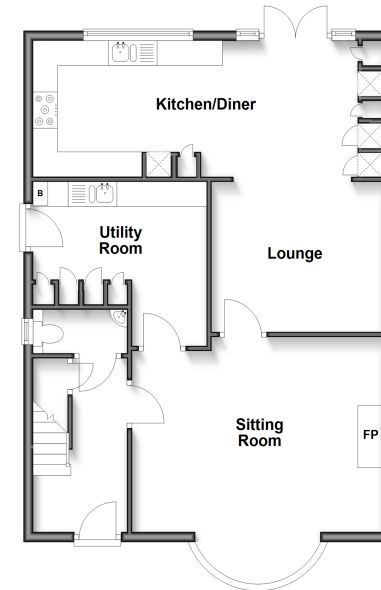
FIRST FLOOR

Landing
 Bedroom 1: 13'2 x 12'7 (4.02m x 3.84m)
 Bedroom 2: 10'5 x 9'1 (3.18m x 2.77m)
 Bedroom 3: 10'0 x 9'9 (3.05m x 2.97m)
 Bedroom 4: 6'9 x 6'9 (2.06m x 2.06m)
 Family Bathroom

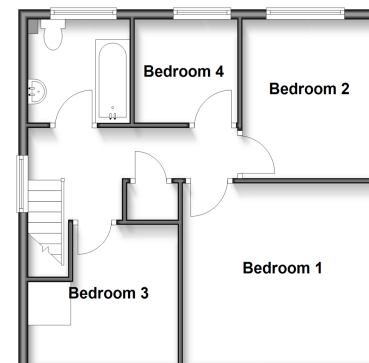
OUTSIDE

Garage
 Driveway
 Rear Garden

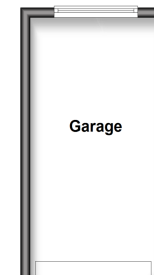
Ground Floor
 Approx. 71.5 sq. metres (769.6 sq. feet)



First Floor
 Approx. 49.8 sq. metres (536.2 sq. feet)



Outbuilding
 Approx. 13.7 sq. metres (147.8 sq. feet)



Call Broadstairs - 01843 602546 ■ wardsof Kent.co.uk

- Legal advice should be taken to verify fixtures/fittings, planning, alterations and/or lease details
- Appliances & services are untested, dimensions are approximate and floor plans are not to scale



10229159/20250925/BW/BW