



OVER 60?

Secure this property
for up to **59% less!**

Price

£250,000

Freehold

2x  1x  1x 

**Prince Charles Road,
Broadstairs, Kent, CT10**

Wards
Helping you move forwards



Main features

- Being sold with no onward chain
- Ideal first time buy or investment
- Lovely sized rear garden
- With schools and shops in close proximity
- Spacious property throughout

Accommodation

GROUND FLOOR

Hallway

Lounge: 11'4 x 8'9 (3.46m x 2.67m)

Dining Area: 10'5 x 10'0 (3.18m x 3.05m)

Kitchen: 10'5 x 7'3 (3.18m x 2.21m)

Cloakroom

FIRST FLOOR

Landing

Shower Room

Bedroom 1: 11'0 x 10'4 (3.36m x 3.15m)

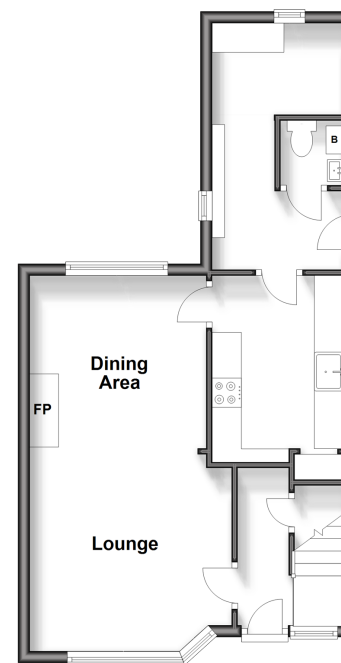
Bedroom 2: 14'9 x 9'0 (4.50m x 2.75m)

OUTSIDE

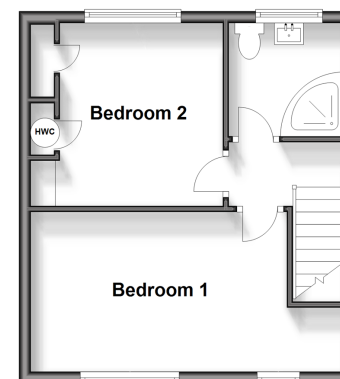
Front Garden

Rear Garden

Ground Floor
Approx. 43.2 sq. metres (465.5 sq. feet)



First Floor
Approx. 32.1 sq. metres (345.8 sq. feet)



Call Broadstairs - 01843 602546 ■ wardsofkent.co.uk

- Legal advice should be taken to verify fixtures/fittings, planning, alterations and/or lease details
- Appliances & services are untested, dimensions are approximate and floor plans are not to scale
- Through a Homewise Home For Life Plan people aged 60+ can secure this property for up to 59% less, by purchasing a Lifetime Lease.