



Price
£535,000

Freehold

3x  2x  2x 

**Harrow Dene,
Broadstairs, Kent, CT10**

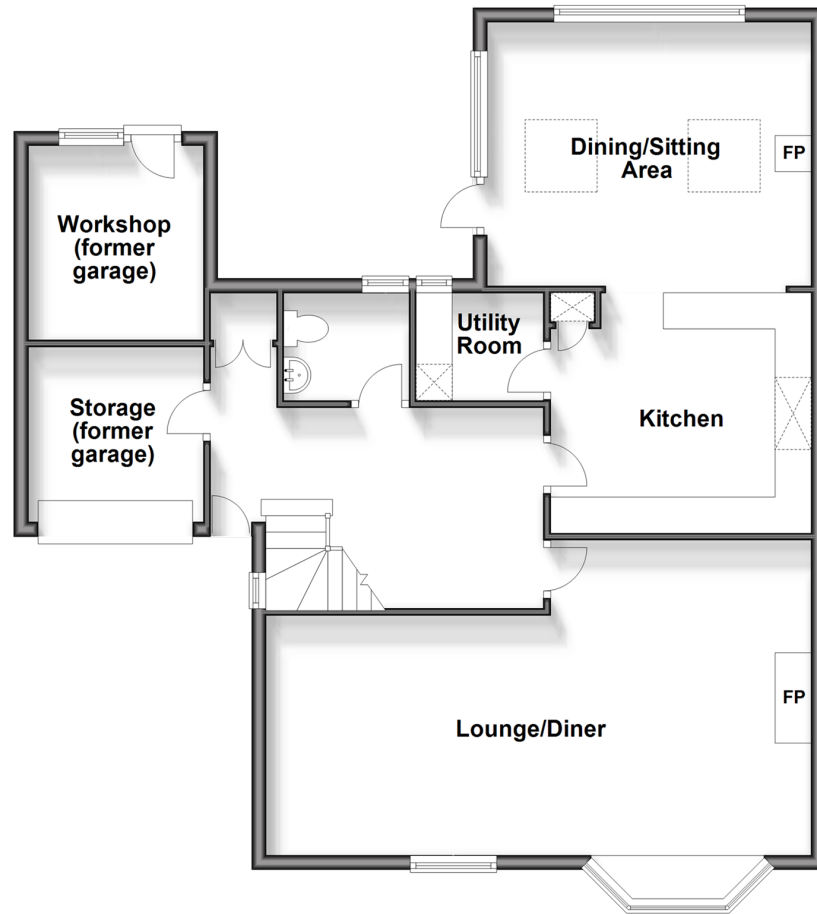
OVER 60?

Secure this property
for up to **59% less!**

Wards
Helping you move forwards

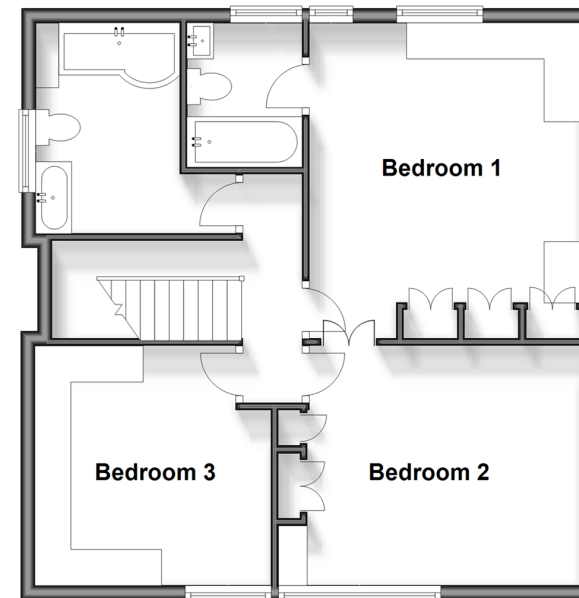
Ground Floor

Approx. 91.7 sq. metres (986.9 sq. feet)



First Floor

Approx. 58.6 sq. metres (631.0 sq. feet)



Accommodation

GROUND FLOOR

Entrance Hall

Downstairs Toilet

Lounge/Diner : 24'3 x 14'3 (7.40m x 4.35m)

Kitchen/Dining/Sitting Area: 23'9 x 11'8 (7.24m x 3.56m)

Utility Room : 5'6 x 4'8 (1.68m x 1.42m)

FIRST FLOOR

Landing

Bedroom 1: 14'2 x 12'3 (4.32m x 3.74m)

En-suite Bathroom

Bedroom 2: 13'9 x 10'9 (4.19m x 3.28m)

Bedroom 3: 10'8 x 10'6 (3.25m x 3.20m)

Family Bathroom

OUTSIDE

Front Garden

Off Road Parking

Rear Garden

Storage (former Garage)

Workshop (former Garage)



Main features

- Chain Free!
- Outside kitchen/BBQ area
- Extended kitchen/diner with a separate utility room
- Within the catchment for schools, transport links and local amenities
- Ready to move into no work required
- Garage with power and electric door



Nearest Schools

Primary Schools: St Joseph's Catholic 0.1 miles, St Peter-in-Thamet CofE 0.3 miles, Upton Junior 0.4 miles.
Secondary Schools: The Charles Dickens 0.3 miles, Dane Court Grammar 0.4 miles, The Foreland School 0.5 miles



Transport Information

Train Stations: Broadstairs 0.4 miles, Dumpton Park 1.3 miles, Ramsgate 1.8 miles



Address

Harrow Dene, Broadstairs, Kent, CT10



Directions

For directions to this property please contact us.



Wards
Helping you move forwards

Call Broadstairs Branch 01843 602546 ■ wardsof Kent.co.uk



- A private rental licensing scheme applies to some properties in this area, please contact us before proceeding
- Appliances & services are untested, dimensions are approximate and floor plans are not to scale

- Legal advice should be taken to verify fixtures/fittings, planning, alterations and/or lease details
- Through a Homewise Home For Life Plan people aged 60+ can secure this property for up to 59% less, by purchasing a Lifetime Lease.



10225520/20240509/JR/ATN