



Price
£210,000

Freehold

Newbury Close,
Birchington, Kent, CT7

OVER 60?

You could get up to
34% off the price!

Wards
Helping you move forwards



Main features

- An excellent first time purchase
- Popular Birch Hill court area
- Handy for village and transport links
- Garage at rear
- Some updated required

Accommodation

GROUND FLOOR

Entrance Hall

Lounge diner: 22'0" x 12'0" (6.71m x 3.66m)

Kitchen: 9'0" x 6'6" (2.74m x 1.98m)

FIRST FLOOR

Bedroom 1: 12'0" x 11'1" (3.66m x 3.38m)

Bedroom 2: 9'8" x 8'2" (2.95m x 2.49m)

Wet room

OUTSIDE

Garage

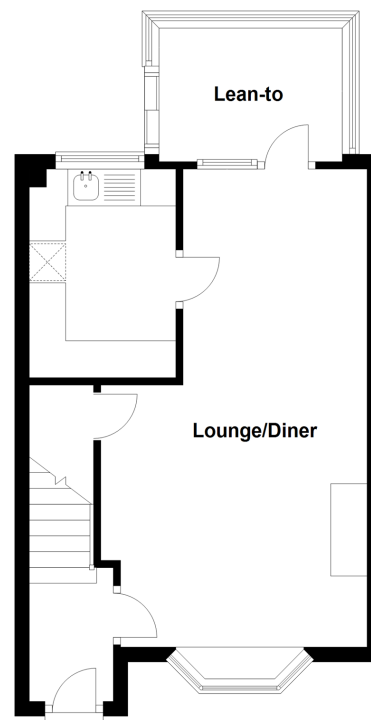
Off road parking

Front Garden

Rear Garden

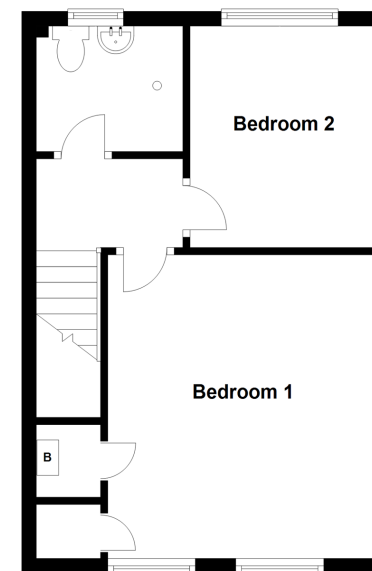
Ground Floor

Approx. 36.0 sq. metres (387.2 sq. feet)



First Floor

Approx. 33.5 sq. metres (360.8 sq. feet)



Call Birchington Branch 01843 842551 ■ wardsofkent.co.uk

The information provided about this property does not constitute or form part of an offer or contract, nor may it be regarded as representations. All interested parties must verify accuracy and your solicitor must verify tenure/lease information, fixtures & fittings and, where the property has been extended/converted, planning/ building regulation consents. All dimensions are approximate and quoted for guidance only as are floor plans which are not to scale and their accuracy cannot be confirmed. Reference to appliances and/or services does not imply that they are necessarily in working order or fit for the purpose.

*Through our partnership with Homewise we can offer a simple 'Home For Life Plan' which will grant you a lifetime lease for your protection. This could enable you to reduce the price of your next property by up to 40%. You could increase your budget, raise money and/or clear debts.

