



OVER 60?

Secure this property
for up to **59% less!**

Guide Price
£240,000

Leasehold

2x  1x  1x 

**Cuthbert Road,
Westgate-On-Sea, Kent,
CT8**

Wards
Helping you move forwards



Main features

- Large open-plan kitchen/lounge/diner with island and integrated appliances
- Stunning sea views from bay window dining area
- Spacious main bedroom with partial sea views
- Short walk to beach and Westgate's shops, cafés, and amenities
- Allocated parking space

Accommodation

FIRST FLOOR

Entrance Hallway

Bathroom : 6'1 x 5'7 (1.86m x 1.70m)

Bedroom 2 : 9'6 x 9'4 (2.90m x 2.85m)

Bedroom 1 : 14'8 x 11'6 (4.47m x 3.51m)

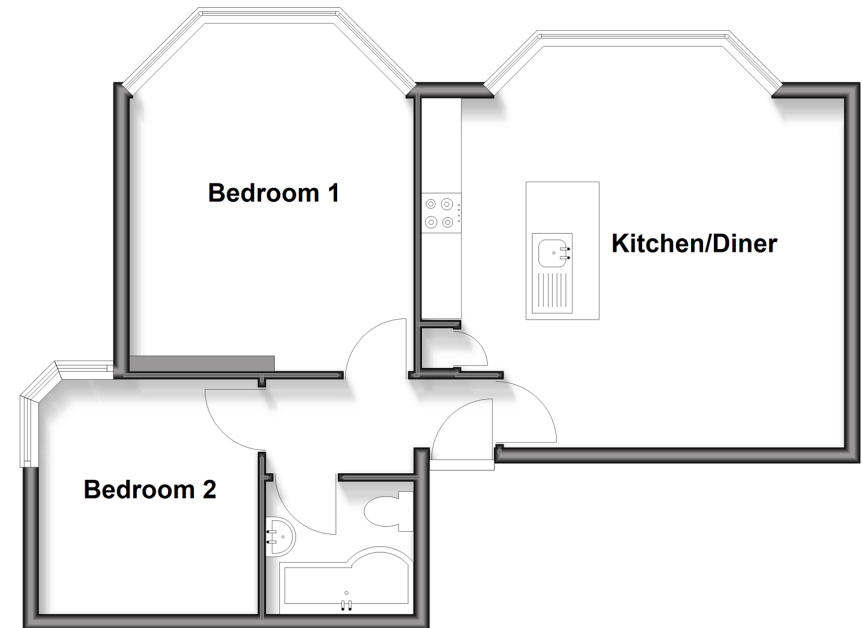
Lounge/Kitchen/Diner : 17'4 x 17'3 (5.29m x 5.26m)

OUTSIDE

Allocated Parking

First Floor

Approx. 51.5 sq. metres (554.6 sq. feet)



Call Birchington - 01843 842551 ■ wardsofkent.co.uk

- Legal advice should be taken to verify fixtures/fittings, planning, alterations and/or lease details
- Through a Homewise Home For Life Plan people aged 60+ can secure this property for up to 50% less, by purchasing a Lifetime Lease.

- Appliances & services are untested, dimensions are approximate and floor plans are not to scale