



OVER 60?

Secure this property
for up to **59% less!**

Price

£300,000

**Share of
Freehold**

2x  1x  1x 

**Geoffrey Court, Alpha
Road, Birchington, Kent,
CT7**

Wards
Helping you move forwards



Main features

- Beautiful first floor apartment
- Garage
- Ready for someone to move straight into
- Very well maintained communal garden
- Just a short stroll to Birchington high street and train station

Accommodation

FIRST FLOOR

Entrance Hallway

Lounge : 17'0 x 14'2 (5.19m x 4.32m)

Kitchen : 11'3 x 9'4 (3.43m x 2.85m)

Bedroom 1 : 13'10 x 11'4 (4.22m x 3.46m)

Bedroom 2 : 12'0 x 10'1 (3.66m x 3.08m)

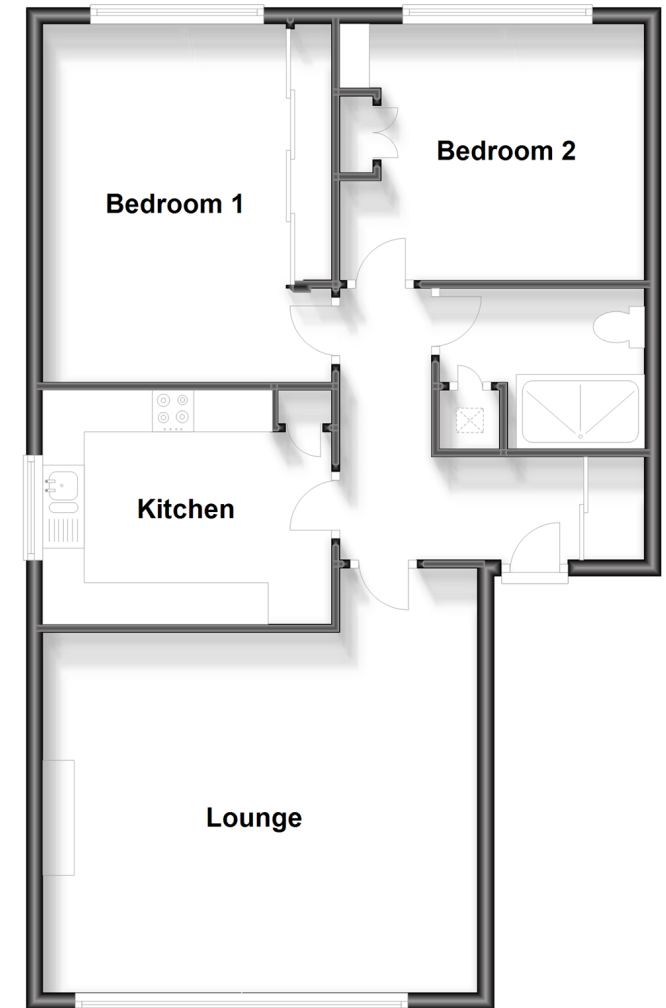
Shower Room

OUTSIDE

Garage

First Floor

Approx. 74.1 sq. metres (797.8 sq. feet)



Call Birchington - 01843 842551 ■ wardsofkent.co.uk

- Legal advice should be taken to verify fixtures/fittings, planning, alterations and/or lease details
- Appliances & services are untested, dimensions are approximate and floor plans are not to scale
- Through a Homewise Home For Life Plan people aged 60+ can secure this property for up to 59% less, by purchasing a Lifetime Lease.



10129462/20250502/ER/DS