

CPR Certificate Not Signed

Price

£300,000

Freehold

3x  1x  1x 

Quex View Road,
Birchington, Kent,
CT7Siu

OVER 60?

Secure this property
for up to **59% less!**

Wards
Helping you move forwards



Main features

- Being sold with no onward chain
- Garage and off road parking
- Beautiful rear garden
- Ready for you to move in and make your own
- Situated in a popular location close to local amenities and transport links

Accommodation

GROUND FLOOR

Entrance Hallway

Lounge : 22'9 x 12'1 (6.94m x 3.69m)

Bedroom 2 : 10'2 x 10'2 (3.10m x 3.10m)

Bedroom 3 : 9'2 x 8'7 (2.80m x 2.62m)

Shower Room

Kitchen : 13'2 x 10'6 (4.02m x 3.20m)

Bedroom 1 : 10'5 x 10'1 (3.18m x 3.08m)

OUTBUILDING

Garage

OUTSIDE

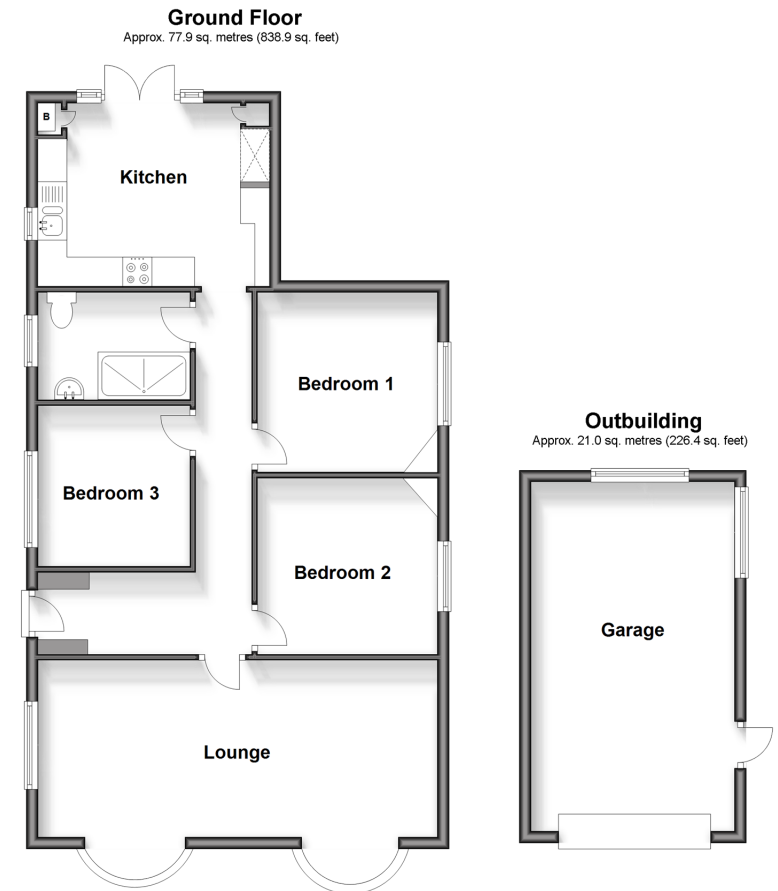
Off Road Parking

Garden to Front

Garden to Rear

Call Birchington - 01843 842551 ■ wardsofkent.co.uk

- Legal advice should be taken to verify fixtures/fittings, planning, alterations and/or lease details
- Appliances & services are untested, dimensions are approximate and floor plans are not to scale
- Through a Homewise Home For Life Plan people aged 60+ can secure this property for up to 59% less, by purchasing a Lifetime Lease.



10129685/20250118/DL/DS