



Price
£300,000

Freehold

2x  1x  1x 

**Quex View Road,
Birchington, Kent, CT7**

OVER 60?

Secure this property
for up to **59% less!**

Wards
Helping you move forwards



Main features

- Being sold with no onward chain
- Garage and off road parking
- Ready for someone to move in and make their own
- If you're a keen gardener then you will love the outside space
- Located in a lovely quiet area with bus routes nearby

Accommodation

GROUND FLOOR

Porch

Entrance Hallway

Bedroom 1: 15'1 x 10'11 (4.60m x 3.33m)

Bedroom 2 : 9'8 x 9'5 (2.95m x 2.87m)

Shower Room: 8'11 x 5'11 (2.72m x 1.80m)

Kitchen : 12'3 x 9'4 (3.74m x 2.85m)

Lounge : 15'8 x 12'2 (4.78m x 3.71m)

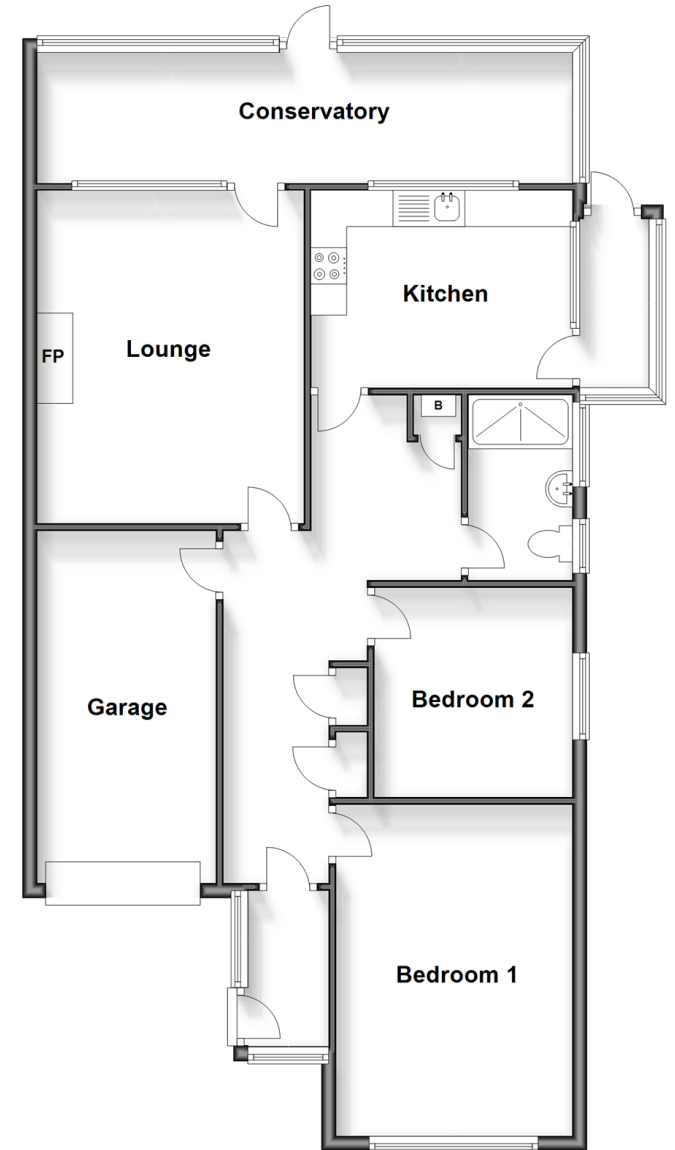
Conservatory : 24'5 x 5'10 (7.45m x 1.78m)

OUTSIDE

Garage and Off Road Parking

Garden to Front and Rear

Ground Floor
Approx. 102.3 sq. metres (1101.1 sq. feet)



Call Birchington - 01843 842551 ■ wardsofkent.co.uk

- Legal advice should be taken to verify fixtures/fittings, planning, alterations and/or lease details
- Appliances & services are untested, dimensions are approximate and floor plans are not to scale
- Through a Homewise Home For Life Plan people aged 60+ can secure this property for up to 59% less, by purchasing a Lifetime Lease.



10129254/20250208/DL/DS