



Price
£550,000

Freehold

3x  1x  2x 

**Plumstone Road, Acol,
Birchington, Kent, CT7**

OVER 60?

Secure this property
for up to **59% less!**

Wards
Helping you move forwards



Main features

- Perfect family home with spacious rooms
- Swimming pool in the garden
- Beautiful open plan kitchen/diner
- Ample off road parking, no searching for a parking space after a long day
- Situated in the popular semi-rural location of Acol

Accommodation

GROUND FLOOR

- Entrance Hallway
- Dining Room Used as a Study : 14'1 x 11'0 (4.30m x 3.36m)
- Kitchen/Breakfast Room: 24'0 x 13'5 (7.32m x 4.09m)
- Utility Room : 11'7 x 5'9 (3.53m x 1.75m)
- Cloakroom
- Lounge : 14'9 x 14'4 (4.50m x 4.37m)
- Former Garage: 13'8 x 9'3 (4.17m x 2.82m)
- Conservatory : 11'10 x 8'4 (3.61m x 2.54m)
- Shower Room

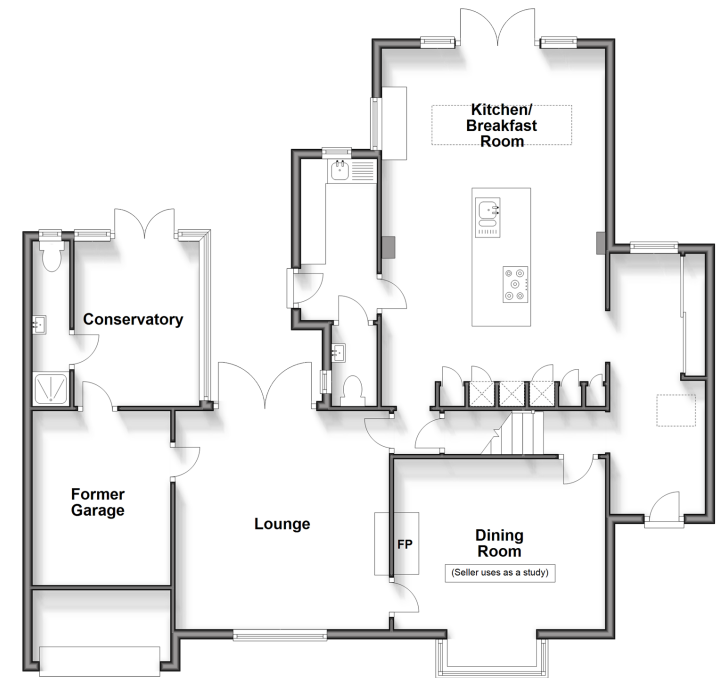
FIRST FLOOR

- Landing
- Bedroom 1 : 14'11 x 9'8 (4.55m x 2.95m)
- En-Suite Bathroom
- Bedroom 2: 13'9 x 11'0 (4.19m x 3.36m)
- Balcony
- En-Suite Shower Room
- Bedroom 3: 10'5 x 8'11 (3.18m x 2.72m)
- En-Suite Shower Room

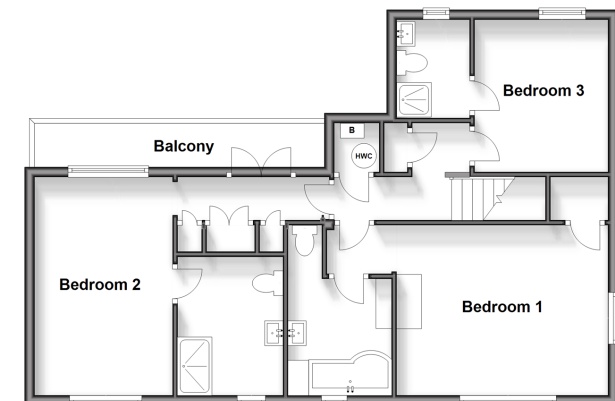
OUTSIDE

- Off Road Parking
- Garden to Rear
- Swimming Pool

Ground Floor
Approx. 116.5 sq. metres (1254.3 sq. feet)



First Floor
Approx. 66.3 sq. metres (713.8 sq. feet)



Call Birchington - 01843 842551 ■ wardsof Kent.co.uk

- A private rental licensing scheme applies to some properties in this area, please contact us before proceeding
- Legal advice should be taken to verify fixtures/fittings, planning, alterations and/or lease details
- Appliances & services are untested, dimensions are approximate and floor plans are not to scale
- Through a Homewise Home For Life Plan people aged 60+ can secure this property for up to 59% less, by purchasing a Lifetime Lease.



10124880/20240426/DL/DS