



**Guide Price**  
**£185,000**

3x  2x  1x 

**Millers Way, Maidstone,  
Kent, ME17**

*Wards*  
Helping you move forwards



## Main features

- Driveway providing off-road parking
- Superb countryside views to rear from decking
- Open plan layout with vaulted ceiling
- On site facilities including swimming pool, gym and entertainment at clubhouse
- Age requirement - over 50

## Accommodation

### GROUND FLOOR

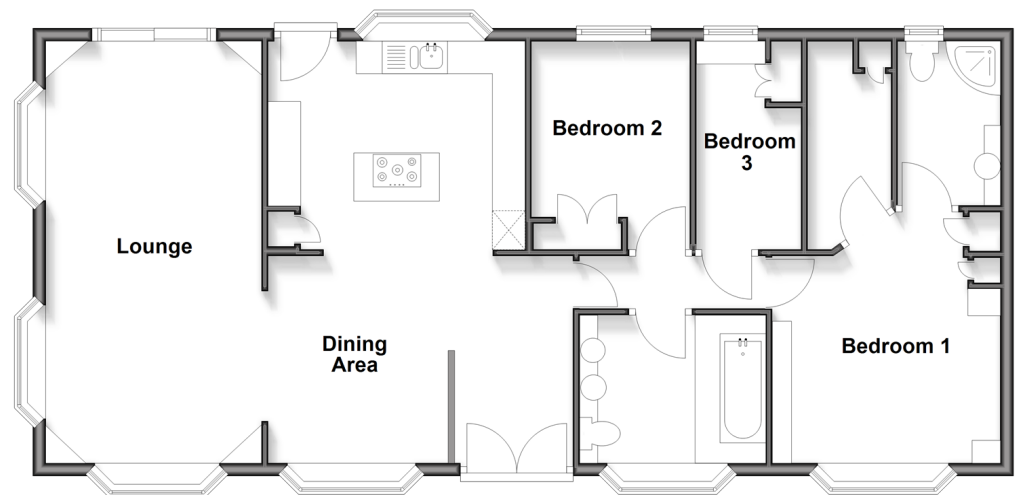
Entrance Hall  
 Dining Area: 15'1 x 10'9 (4.60m x 3.28m)  
 Kitchen: 12'6 x 10'7 (3.81m x 3.23m)  
 Lounge: 21'4 x 10'9 (6.51m x 3.28m)  
 Bedroom 1: 12'7 x 11'5 (3.84m x 3.48m)  
 En-suite Shower Room: 8'6 x 5'5 (2.59m x 1.65m)  
 Walk-in Wardrobe: 10'1 x 4'2 (3.08m x 1.27m)  
 Bedroom 2: 10'5 x 7'11 (3.18m x 2.41m)  
 Bedroom 3: 10'5 x 5'3 (3.18m x 1.60m)  
 Bathroom: 9'3 x 7'5 (2.82m x 2.26m)

### OUTSIDE

Driveway  
 Rear Garden  
 Storage Shed

### Ground Floor

Approx. 93.6 sq. metres (1008.0 sq. feet)



**Call Bearsted - 01622 730955 ■ [wardsofkent.co.uk](http://wardsofkent.co.uk)**

- If buying to let, the energy rating will need to be improved to at least 'E' rating before you can let the property
- Appliances & services are untested, dimensions are approximate and floor plans are not to scale

■ Legal advice should be taken to verify fixtures/fittings, planning, alterations and/or lease details



12328576/20251217/DF/DF