



**Guide Price**  
**£400,000**

**Freehold**

3x  1x  1x 

**Threshers Drive,  
Weaving, Maidstone,  
Kent, ME14**

**OVER 60?**

Secure this property  
for up to **59% less!**

*Wards*  
Helping you move forwards





## Main features

- **Excellent size rear garden with plenty of space to enjoy**
- **Offered chain free and within walking distance to Grove Green amenities**
- **Incredible conservatory extension providing additional space to entertain**
- **Converted garage allowing for downstairs toilet and more storage**
- **Short drive to M20 motorway and Bearsted train station**

## Accommodation

### GROUND FLOOR

Porch  
Entrance Hall  
Cloakroom: 4'10 x 3'0 (1.47m x 0.92m)  
Lounge: 19'1 x 11'1 (5.82m x 3.38m)  
Kitchen: 11'9 x 6'1 (3.58m x 1.86m)  
Former Garage: 7'7 x 7'6 (2.31m x 2.29m)  
Conservatory: 18'7 x 11'2 (5.67m x 3.41m)

### FIRST FLOOR

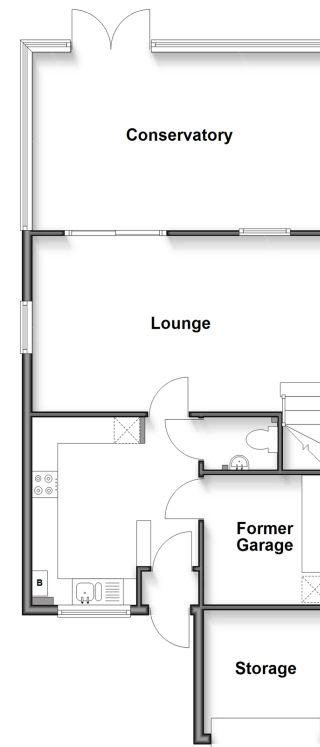
Landing  
Shower Room: 7'0 x 5'5 (2.14m x 1.65m)  
Bedroom 1: 14'2 x 9'5 (4.32m x 2.87m)  
Bedroom 2: (L-shaped) 9'5 x 9'0 (2.87m x 2.75m) plus 6'1 x 2'0 (1.86m x 0.61m)  
Bedroom 3: 9'3 x 8'10 (2.82m x 2.69m)

### OUTSIDE

Front and Rear Gardens  
Storage  
Driveway

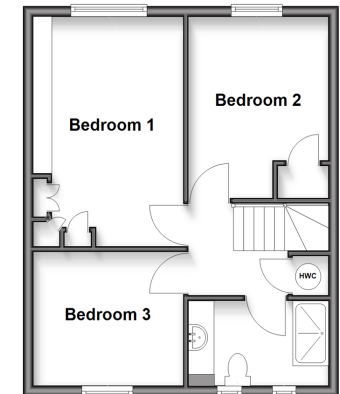
### Ground Floor

Approx. 67.0 sq. metres (720.7 sq. feet)



### First Floor

Approx. 40.8 sq. metres (438.7 sq. feet)



**Call Bearsted - 01622 730955 ■ [wardsofkent.co.uk](http://wardsofkent.co.uk)**

■ Legal advice should be taken to verify fixtures/fittings, planning, alterations and/or lease details  
■ Through a Homewise Home For Life Plan people aged 60+ can secure this property for up to 50% less, by purchasing a Lifetime Lease.

■ Appliances & services are untested, dimensions are approximate and floor plans are not to scale