



Guide Price
£400,000

Freehold

3x  2x  2x 

**Southfields Way,
Harrietsham, Maidstone,
Kent, ME17**

OVER 60?

Secure this property
for up to **59% less!**

Wards
Helping you move forwards



Main features

- 2 allocated parking spaces to the front of the property
- Separate kitchen and dining room
- Spacious bedrooms throughout
- Large lounge with double doors opening to rear garden, perfect for entertaining
- Close proximity to amenities and the train station

Accommodation

GROUND FLOOR

Entrance Hall

Lounge: 17'10 x 10'10 (5.44m x 3.30m)

Dining Room: (L-shaped) 13'10 x 7'11 (4.22m x 2.41m) plus 6'8 x 3'6 (2.03m x 1.07m)

Kitchen: 13'4 x 9'6 (4.07m x 2.90m)

Cloakroom: 13'5 x 5'9 (4.09m x 1.75m)

FIRST FLOOR

Landing

Bedroom 1

En-suite Shower Room: 7'11 x 6'3 (2.41m x 1.91m)

Bedroom 2: 11'0 x 10'3 (3.36m x 3.13m)

Bedroom 3: 7'5 x 7'3 (2.26m x 2.21m)

Bathroom

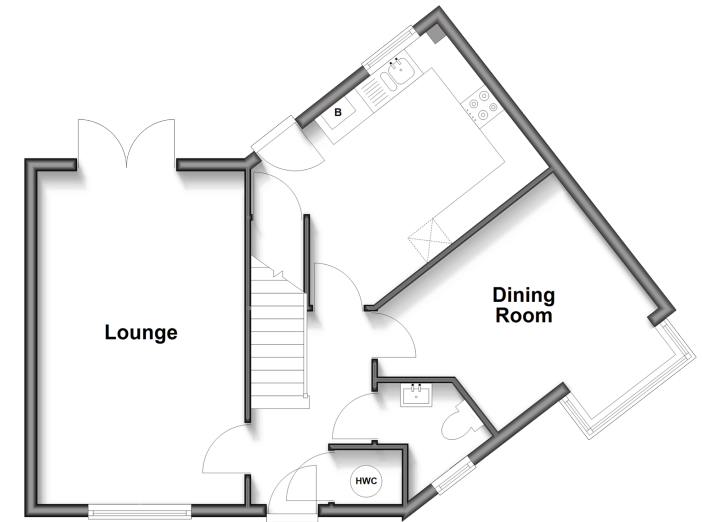
OUTSIDE

Front and Rear Gardens

2 x Allocated Parking

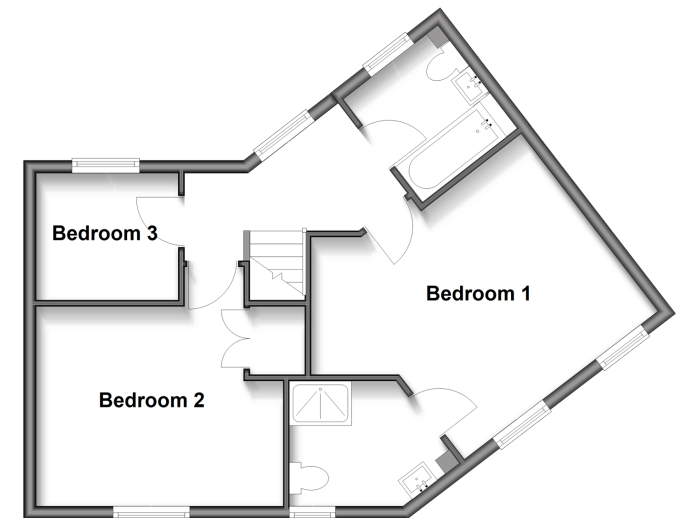
Ground Floor

Approx. 49.8 sq. metres (535.9 sq. feet)



First Floor

Approx. 49.2 sq. metres (529.6 sq. feet)



Call Bearsted - 01622 730955 ■ wardsofkent.co.uk

- Legal advice should be taken to verify fixtures/fittings, planning, alterations and/or lease details
- Appliances & services are untested, dimensions are approximate and floor plans are not to scale
- Through a Homewise Home For Life Plan people aged 60+ can secure this property for up to 59% less, by purchasing a Lifetime Lease.



12329194/20250611/LNR/LNR