



Guide Price
£375,000

Freehold

3x  2x  1x 

**Gates Drive, Maidstone,
Kent, ME17**

OVER 60?

Secure this property
for up to **59% less!**

Wards
Helping you move forwards



Main features

- En-suite shower room to largest bedroom
- Excellent size kitchen/diner leading to rear decking
- Single drive leading to garage
- Spacious rear garden, perfect for entertaining
- Close to proximity to local schools, ideal for pick up and drop off

Accommodation

GROUND FLOOR

Entrance Hall

Lounge: 13'11 x 12'0 (4.24m x 3.66m)

Kitchen/Diner: 15'5 x 9'5 (4.70m x 2.87m)

Cloakroom: 5'11 x 3'4 (1.80m x 1.02m)

FIRST FLOOR

Landing

Bedroom 1: (L-shaped) 9'8 x 9'2 (2.95m x 2.80m) plus 6'1 x 5'1 (1.86m x 1.55m)

En-suite Shower Room: 5'9 x 5'5 (1.75m x 1.65m)

Bedroom 2: 11'6 x 8'7 (3.51m x 2.62m)

Bedroom 3: 11'7 x 6'7 (3.53m x 2.01m)

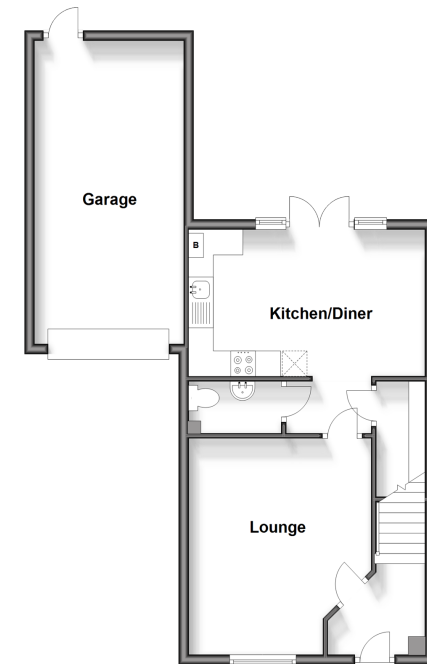
Bathroom: 6'7 x 5'7 (2.01m x 1.70m)

OUTSIDE

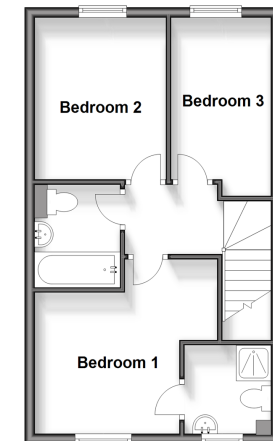
Front and Rear Gardens

Garage and Driveway

Ground Floor
Approx. 58.2 sq. metres (626.1 sq. feet)



First Floor
Approx. 39.1 sq. metres (420.8 sq. feet)



Call Bearsted - 01622 730955 ■ wardsofkent.co.uk

- Legal advice should be taken to verify fixtures/fittings, planning, alterations and/or lease details
- Appliances & services are untested, dimensions are approximate and floor plans are not to scale
- Through a Homewise Home For Life Plan people aged 60+ can secure this property for up to 59% less, by purchasing a Lifetime Lease.



12329100/20250313/DF/LNR