



**Guide Price**  
**£325,000**

**Freehold**

2x  1x  1x 

**Tasker Close, Bearsted,  
Maidstone, Kent, ME15**

**OVER 60?**

Secure this property  
for up to **59% less!**

*Wards*  
Helping you move forwards



## Main features

- Manageable size rear garden whilst suitable for entertaining
- Driveway with garage providing access to garden
- Walking distance to local Bearsted amenities such as restaurants/cafes
- Excellent condition throughout with stylish decorative choices
- Perfect first-time buyer or investment opportunity

## Accommodation

### GROUND FLOOR

Kitchen/Diner: 11'11 x 8'1 (3.63m x 2.47m)

Lounge: 14'4 x 11'11 (4.37m x 3.63m)

### FIRST FLOOR

Landing

Bedroom 1: (L-shaped) 12'0 x 7'10 (3.66m x 2.39m) plus 6'1 x 1'11 (1.86m x 0.58m)

Bedroom 2: 11'11 x 8'1 (3.63m x 2.47m)

Bathroom: (L-shaped) 5'10 x 5'6 (1.78m x 1.68m) plus 3'10 x 3'6 (1.17m x 1.07m)

### OUTSIDE

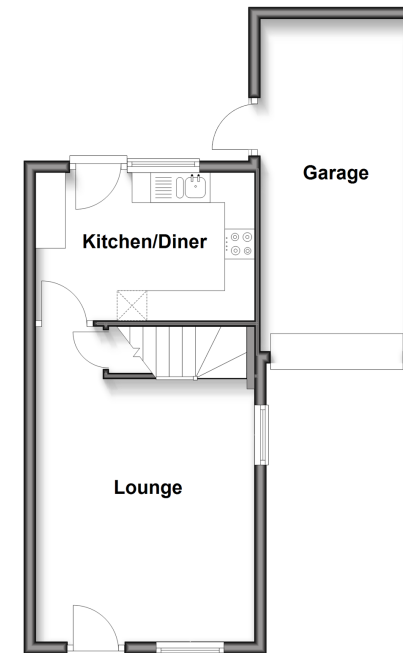
Front and Rear Gardens

Garage: 18'0 x 7'10 (5.49m x 2.39m)

Driveway

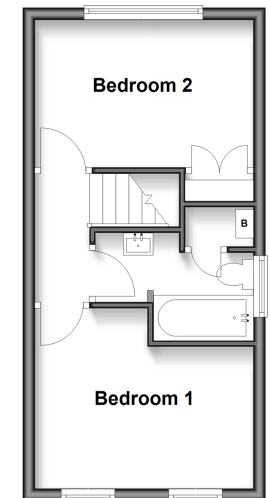
### Ground Floor

Approx. 42.7 sq. metres (458.8 sq. feet)



### First Floor

Approx. 28.8 sq. metres (309.9 sq. feet)



Call Bearsted - 01622 730955 ■ [wardsofkent.co.uk](http://wardsofkent.co.uk)

- Legal advice should be taken to verify fixtures/fittings, planning, alterations and/or lease details
- Through a Homewise Home For Life Plan people aged 60+ can secure this property for up to 59% less, by purchasing a Lifetime Lease.

- Appliances & services are untested, dimensions are approximate and floor plans are not to scale



12329088/20250227/HC/DF