



Guide Price
£350,000

Freehold

3x  2x  1x 

**Malvern Road,
Maidstone, Kent, ME15**

OVER 60?

Secure this property
for up to **59% less!**

Wards
Helping you move forwards



Main features

- Offered chain free
- Parking available for multiple vehicles
- Open kitchen/diner with views into the garden
- Carport located to the right of the property
- Large bedroom with en-suite

Accommodation

GROUND FLOOR

Entrance Hall: 6'5 x 6'3 (1.96m x 1.91m)
 Kitchen/Diner: (L-shaped) 15'6 x 9'10 (4.73m x 3.00m) plus 3'5 x 1'5 (1.04m x 0.43m)
 Lounge: 15'5 x 11'7 (4.70m x 3.53m)
 Cloakroom: 6'4 x 4'3 (1.93m x 1.30m)

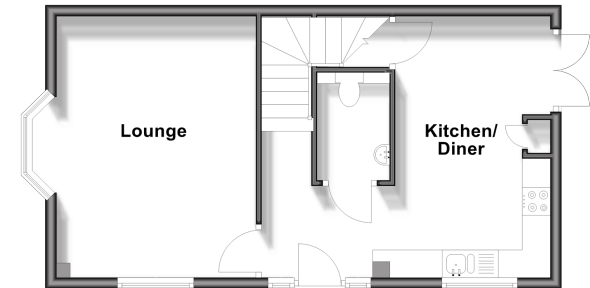
FIRST FLOOR

Landing
 Bedroom 1: 11'7 x 10'6 (3.53m x 3.20m)
 En-suite Shower Room
 Bedroom 2: 12'0 x 8'6 (3.66m x 2.59m)
 Bedroom 3: 9'11 x 6'7 (3.02m x 2.01m)
 Bathroom: 6'11 x 5'6 (2.11m x 1.68m)

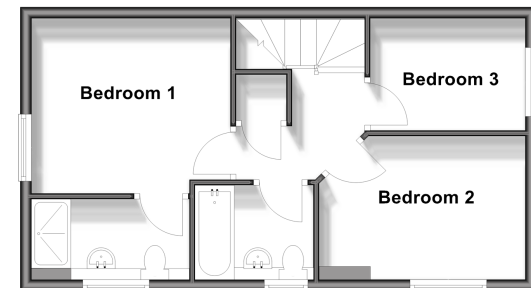
OUTSIDE

Front and Rear Gardens
 Car Barn
 Driveway

Ground Floor
 Approx. 41.7 sq. metres (448.7 sq. feet)



First Floor
 Approx. 41.5 sq. metres (446.5 sq. feet)



Call Bearsted - 01622 730955 ■ wardsofkent.co.uk

■ Legal advice should be taken to verify fixtures/fittings, planning, alterations and/or lease details
 ■ Through a Homewise Home For Life Plan people aged 60+ can secure this property for up to 59% less, by purchasing a Lifetime Lease.

■ Appliances & services are untested, dimensions are approximate and floor plans are not to scale



12328833/20250612/SG/LNR