



Price
£750,000

Freehold

5x  2x  3x 

**Yeoman Park, Bearsted,
Maidstone, Kent, ME15**

OVER 60?

Secure this property
for up to **59% less!**

Wards
Helping you move forwards



Main features

- Private driveway with double garage included
- Close to motorway and station
- Lovely quiet cul-de-sac location
- Main bedroom complete with en-suite shower room.
- Large rear garden with sunny aspect, ideal for entertaining
- Offered chain-free

Accommodation

GROUND FLOOR

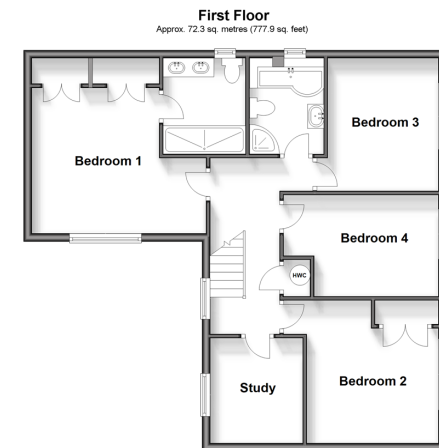
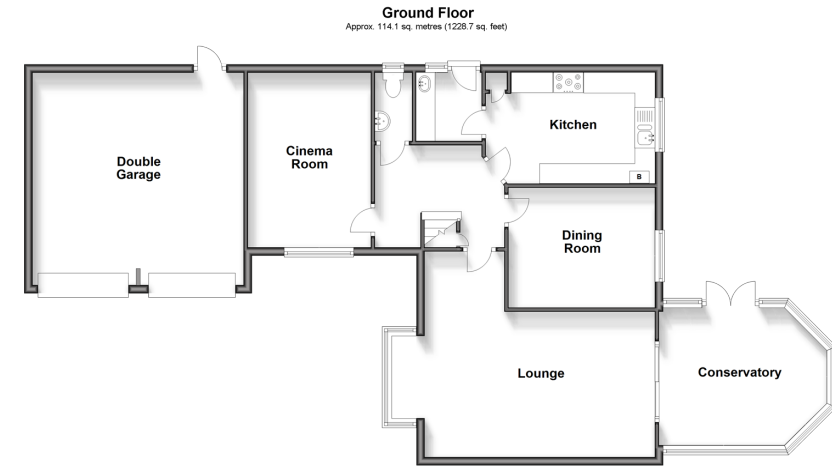
Entrance Hall: 10'7 x 9'2 (3.23m x 2.80m)
 Lounge: (L-shaped) 18'7 x 11'9 (5.67m x 3.58m) plus 6'3 x 3'1 (1.91m x 0.94m)
 Cinema Room: 12'7 x 9'9 (3.84m x 2.97m)
 Dining Room
 Utility Room: 6'5 x 5'4 (1.96m x 1.63m)
 Kitchen: 13'7 x 8'8 (4.14m x 2.64m)
 Conservatory: 14'6 x 12'7 (4.42m x 3.84m)
 Cloakroom: 5'6 x 2'11 (1.68m x 0.89m)

FIRST FLOOR

Landing
 Bedroom 1: (L-shaped) 11'11 x 10'10 (3.63m x 3.30m) plus 6'0 x 3'4 (1.83m x 1.02m)
 En-suite Shower Room: 7'9 x 6'5 (2.36m x 1.96m)
 Bedroom 2: (L-shaped) 11'6 x 11'4 (3.51m x 3.46m) plus 2'10 x 1'9 (0.86m x 0.53m)
 Bedroom 3: (L-shaped) 9'11 x 8'1 (3.02m x 2.47m) plus 9'11 x 2'5 (3.02m x 0.74m)
 Bedroom 4: 11'0 x 8'11 (3.36m x 2.72m)
 Study: 8'4 x 7'8 (2.54m x 2.34m)
 Bathroom: 8'6 x 5'10 (2.59m x 1.78m)

OUTSIDE

Front and Rear Gardens
 Double Garage
 Driveway



Call Bearsted - 01622 730955 ■ wardsofkent.co.uk

- Legal advice should be taken to verify fixtures/fittings, planning, alterations and/or lease details
- Appliances & services are untested, dimensions are approximate and floor plans are not to scale
- Through a Homewise Home For Life Plan people aged 60+ can secure this property for up to 59% less, by purchasing a Lifetime Lease.



12329095/20250410/SG/LNR