



Price
£250,000

Freehold

2x  1x  2x 

**Church Hill Cottages,
Upper Street, Leeds,
Maidstone, Kent, ME17**

OVER 60?

Secure this property
for up to **59% less!**

Wards
Helping you move forwards



Main features

- Popular village location within short walk of Ledian Gardens amenities
- Spacious rear garden with plenty of potential to explore
- Fantastic opportunity to transform internally
- Manageable property, suitable for couples or single occupiers
- Close links to M20 Motorway

Accommodation

GROUND FLOOR

Entrance Hall

Lounge: 12'0 x 9'7 (3.66m x 2.92m)

Dining Room: (L-shaped) 9'3 x 9'1 (2.82m x 2.77m) plus 3'11 x 2'9 (1.19m x 0.84m)

Kitchen: 9'2 x 6'7 (2.80m x 2.01m)

Rear Lobby

Cloakroom: 4'8 x 2'5 (1.42m x 0.74m)

Lean-to: 6'9 x 5'9 (2.06m x 1.75m)

FIRST FLOOR

Landing

Bedroom 1: 13'5 x 9'8 (4.09m x 2.95m)

Bedroom 2: (L-shaped) 9'7 x 8'1 (2.92m x 2.47m) plus 5'9 x 0'11 (1.75m x 0.28m)

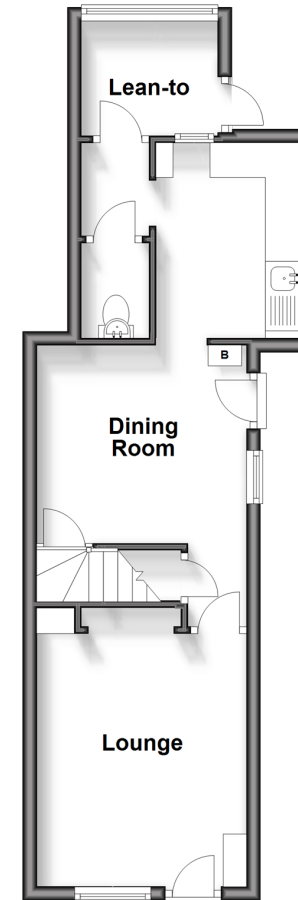
Bathroom: (L-shaped) 9'1 x 4'5 (2.77m x 1.35m) plus 4'6 x 1'9 (1.37m x 0.53m)

OUTSIDE

Front and Rear Gardens

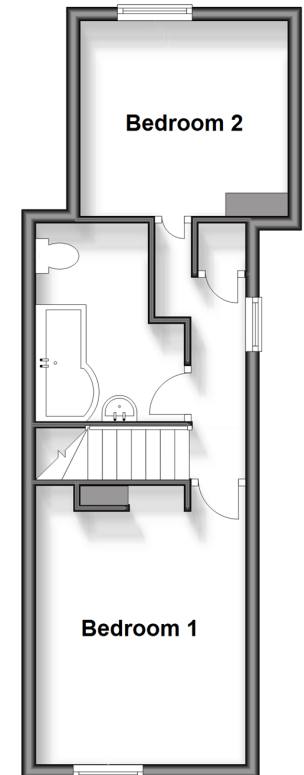
Ground Floor

Approx. 35.7 sq. metres (384.5 sq. feet)



First Floor

Approx. 32.3 sq. metres (347.8 sq. feet)



Call Bearsted - 01622 730955 ■ wardsofkent.co.uk

- Legal advice should be taken to verify fixtures/fittings, planning, alterations and/or lease details
- Appliances & services are untested, dimensions are approximate and floor plans are not to scale
- Through a Homewise Home For Life Plan people aged 60+ can secure this property for up to 59% less, by purchasing a Lifetime Lease.



12328927/20250305/LNR/DF