



**OVER 60?**

Secure this property  
for up to **59% less!**

**Guide Price**

**£325,000**

**Freehold**

3x  1x  1x 

**Whatman Drive,  
Maidstone, Kent, ME14**

*Wards*  
Helping you move forwards





## Main features

- **Excellent local amenities and schools**
- **Garage and parking to rear**
- **Modern build with remainder of warranty available**
- **Open plan kitchen/diner in great condition**
- **Spacious and versatile accommodation throughout**

## Accommodation

### GROUND FLOOR

Entrance Hall : 5'1 x 5'0 (1.55m x 1.53m)  
 Lounge: (L-shaped) 12'2 x 6'11 (3.71m x 2.11m) plus 9'0 x 5'9 (2.75m x 1.75m)  
 Kitchen: 9'8 x 9'0 (2.95m x 2.75m)  
 Cloakroom: 4'10 x 2'9 (1.47m x 0.84m)

### FIRST FLOOR

Landing  
 Bedroom 2: 12'2 x 7'10 (3.71m x 2.39m)  
 Bedroom 3: (L-shaped) 7'9 x 5'7 (2.36m x 1.70m) plus 6'7 x 2'11 (2.01m x 0.89m)  
 Bathroom: 5'11 x 5'6 (1.80m x 1.68m)

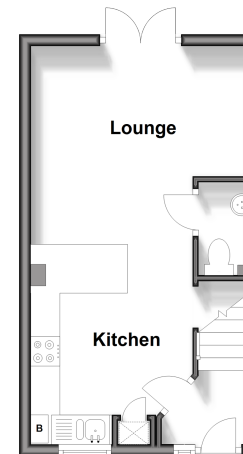
### SECOND FLOOR

Landing  
 Bedroom 1: 17'9 x 8'9 (5.41m x 2.67m)  
 Cupboard: 3'11 x 3'1 (1.19m x 0.94m)

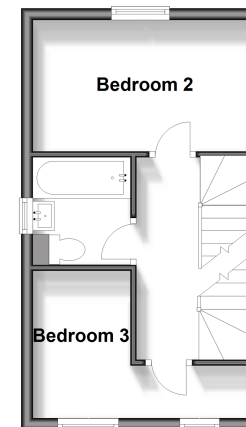
### OUTSIDE

Front and Rear Gardens  
 Garage  
 Allocated Parking

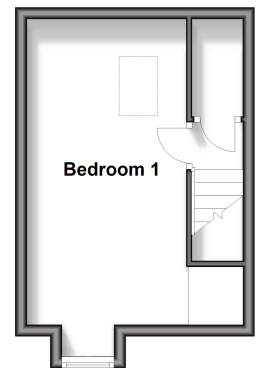
**Ground Floor**  
 Approx. 25.2 sq. metres (271.2 sq. feet)



**First Floor**  
 Approx. 25.2 sq. metres (271.2 sq. feet)



**Second Floor**  
 Approx. 19.8 sq. metres (213.4 sq. feet)



**Call Bearsted - 01622 730955 ■ [wardsofkent.co.uk](http://wardsofkent.co.uk)**

■ Legal advice should be taken to verify fixtures/fittings, planning, alterations and/or lease details  
 ■ Through a Homewise Home For Life Plan people aged 60+ can secure this property for up to 59% less, by purchasing a Lifetime Lease.

■ Appliances & services are untested, dimensions are approximate and floor plans are not to scale