



Price
£375,000

Freehold

3x  2x  1x 

**Wenham Drive,
Maidstone, Kent, ME17**

OVER 60?

Secure this property
for up to **59% less!**

Wards
Helping you move forwards



Main features

- En-suite shower room to largest bedroom
- Excellent size kitchen/diner leading to rear patio
- Spacious rear garden, perfect for socialising
- Double drive, leading to garage
- Close proximity to local schools, ideal for pick up and drop off

Accommodation

GROUND FLOOR

Entrance Hall
 Kitchen: 15'3 x 9'4 (4.65m x 2.85m)
 Lounge: 13'11 x 12'1 (4.24m x 3.69m)
 Cloakroom: 5'11 x 3'4 (1.80m x 1.02m)

FIRST FLOOR

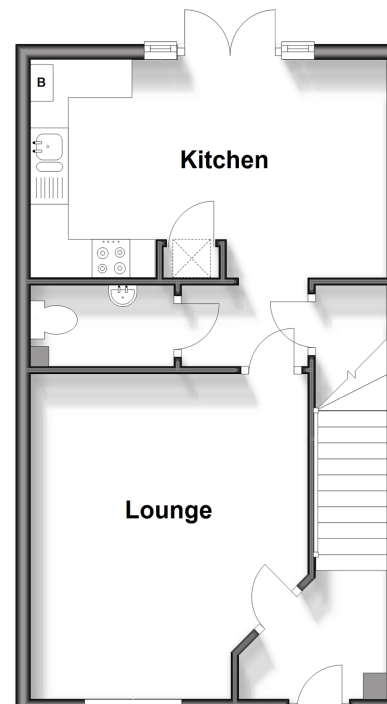
Landing
 Bedroom 1: 11'1 x 9'7 (3.38m x 2.92m)
 En-suite Shower Room: 5'7 x 5'5 (1.70m x 1.65m)
 Bedroom 2: 10'8 x 8'9 (3.25m x 2.67m)
 Bedroom 3: 11'7 x 6'5 (3.53m x 1.96m)
 Bathroom: 6'7 x 5'7 (2.01m x 1.70m)

OUTSIDE

Front and Rear Garden
 Garage
 Driveway

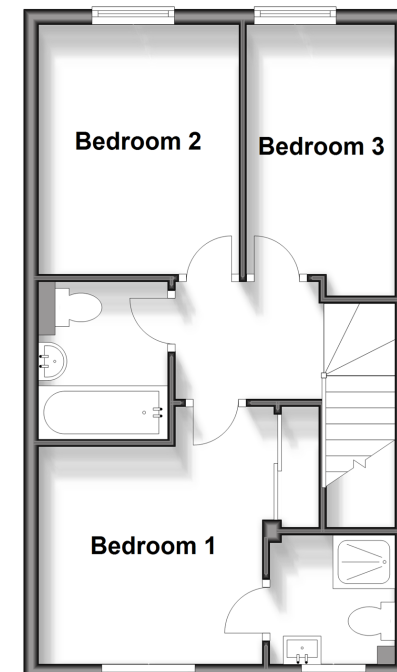
Ground Floor

Approx. 39.6 sq. metres (425.7 sq. feet)



First Floor

Approx. 39.6 sq. metres (425.7 sq. feet)



Call Bearsted - 01622 730955 ■ wardsofkent.co.uk

■ Legal advice should be taken to verify fixtures/fittings, planning, alterations and/or lease details
 ■ Through a Homewise Home For Life Plan people aged 60+ can secure this property for up to 59% less, by purchasing a Lifetime Lease.

■ Appliances & services are untested, dimensions are approximate and floor plans are not to scale



12329035/20241109/SG/LNR