



Price
£675,000

Freehold

5x  2x  2x 

**Manor Rise, Bearsted,
Maidstone, Kent, ME14**

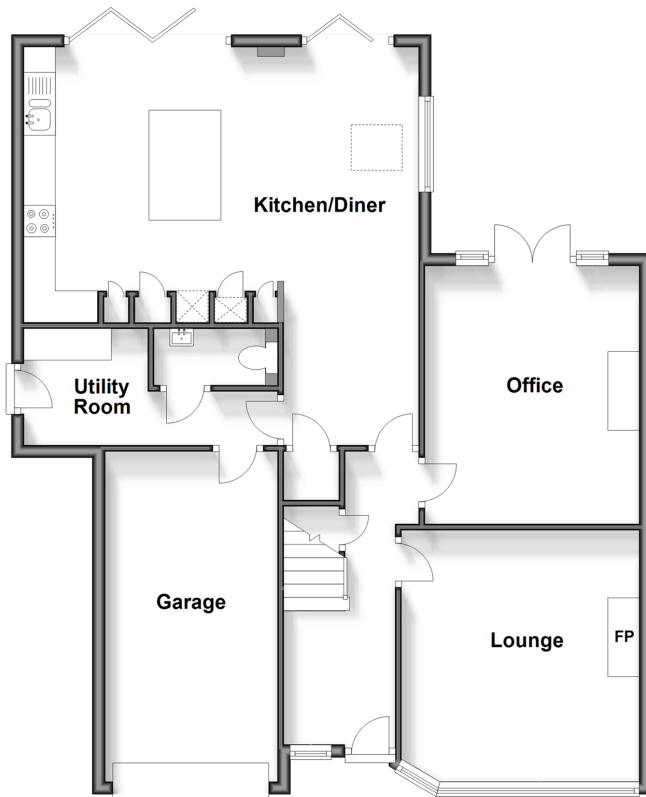
OVER 60?

Secure this property
for up to **59% less!**

Wards
Helping you move forwards

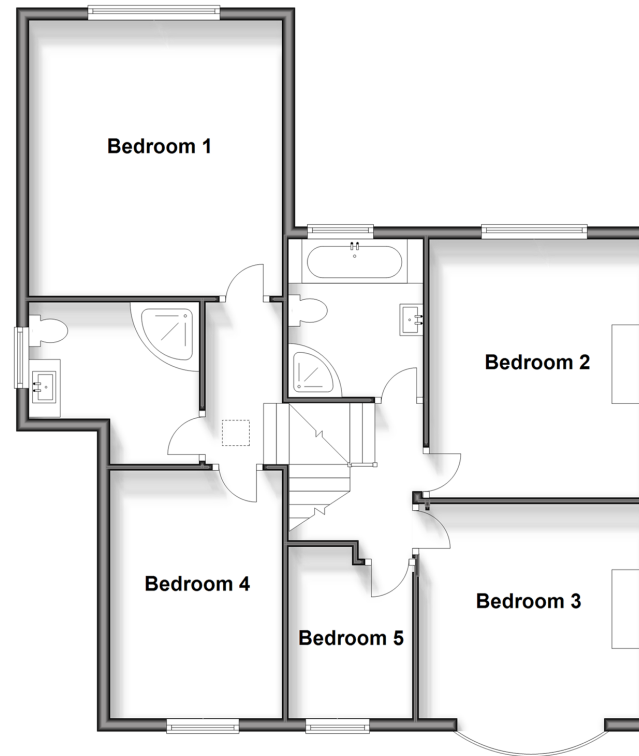
Ground Floor

Approx. 93.9 sq. metres (1010.9 sq. feet)



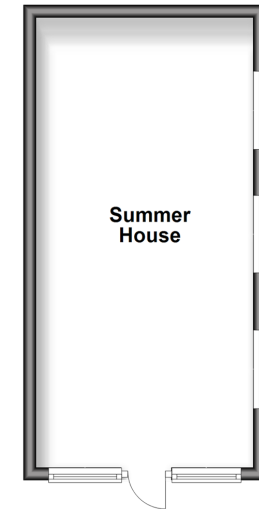
First Floor

Approx. 82.7 sq. metres (890.2 sq. feet)



Outbuilding

Approx. 24.8 sq. metres (266.6 sq. feet)



Accommodation

GROUND FLOOR

Entrance Hall

Lounge: 13'4 x 12'4 (4.07m x 3.76m)

Kitchen/Diner: (L-shaped) 21'4 x 12'4 (6.51m x 3.76m) plus 8'5 x 7'0 (2.57m x 2.14m)

Office: 13'5 x 11'3 (4.09m x 3.43m)

Utility Room: (L-shaped) 6'1 x 5'11 (1.86m x 1.80m) plus 5'10 x 2'9 (1.78m x 0.84m)

Cloakroom: 5'0 x 2'11 (1.53m x 0.89m)

FIRST FLOOR

Landing

Bedroom 1: 14'3 x 12'4 (4.35m x 3.76m)

Bedroom 2: 13'2 into bay x 11'7 (4.02m x 3.53m)

Bedroom 3: 13'6 x 11'0 (4.12m x 3.36m)

Bedroom 4: 12'11 x 8'9 (3.94m x 2.67m)

Bedroom 5: 8'0 x 6'11 (2.44m x 2.11m)

Shower Room: (L-shaped) 8'4 x 6'0 (2.54m x 1.83m) plus 5'1 x 1'9 (1.55m x 0.53m)

Bathroom: 8'5 x 6'11 (2.57m x 2.11m)

OUTBUILDING

Summer House: 23'3 x 11'4 (7.09m x 3.46m)

OUTSIDE

Garage: 17'0 x 9'0 (5.19m x 2.75m)

Driveway

Rear Garden



Main features

- Incredibly desirable location close to Bearsted Green
- Expansive accommodation with wonderful extensions
- Open plan kitchen/dining area with bi-folding doors to garden
- Large summerhouse providing outside entertainment space



Nearest Schools

Primary Schools: Roseacre Junior School 0.8 miles, Madginford Park Junior School 0.9 miles, Maidstone, St John's C of E Primary 2.0 miles

Secondary Schools: Invicta Grammar School 2.3 miles,



Transport Information

Train Stations: Bearsted 0.6 miles, Maidstone Barracks 2.7 miles, Maidstone West 3.1 miles



Address

Manor Rise, Bearsted, Maidstone, Kent, ME14



Directions

For directions to this property please contact us.



Wards
Helping you move forwards

Call Bearsted Branch 01622 730955 ■ wardsofkent.co.uk



- Legal advice should be taken to verify fixtures/fittings, planning, alterations and/or lease details
- Appliances & services are untested, dimensions are approximate and floor plans are not to scale
- Through a Homewise Home For Life Plan people aged 60+ can secure this property for up to 59% less, by purchasing a Lifetime Lease.

EPC RATING

CURRENT:	POTENTIAL:
C(70)	B(81)

12329031/20241114/BM/DF