



Price
£350,000

Freehold

3x  2x  1x 

**Southfields Way,
Harrietsham, Maidstone,
Kent, ME17**

OVER 60?

Secure this property
for up to **59% less!**

Wards
Helping you move forwards



Main features

- Spacious rear garden with much larger than anticipated plot
- Stunning views to the rear from 1st floor
- En-suite shower room
- Tandem driveway providing off road parking for 2 cars
- Short walk to Harrietsham train station and local primary school

Accommodation

GROUND FLOOR

Entrance Hall

Lounge/Diner: (L-shaped) 14'5 x 11'7 (4.40m x 3.53m) plus 8'9 x 3'4 (2.67m x 1.02m)

Kitchen: 12'3 x 8'0 (3.74m x 2.44m)

Cloakroom: 5'0 x 3'1 (1.53m x 0.94m)

FIRST FLOOR

Landing

Bedroom 1: (L-shaped) 12'0 x 8'6 (3.66m x 2.59m) plus 3'2 x 1'10 (0.97m x 0.56m)

En-suite Shower Room: (L-shaped) 5'0 x 4'4 (1.53m x 1.32m) plus 3'6 x 2'5 (1.07m x 0.74m)

Bedroom 2: 10'1 x 8'6 (3.08m x 2.59m)

Bedroom 3: 8'9 x 6'2 (2.67m x 1.88m)

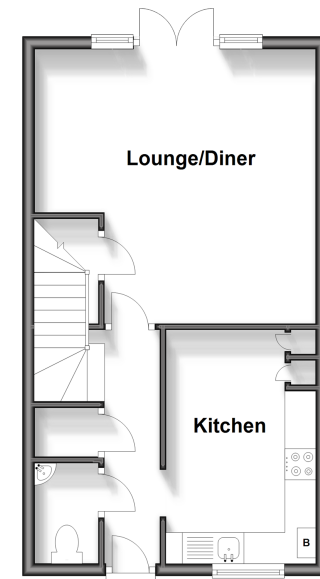
Bathroom: (L-shaped) 6'2 x 5'5 (1.88m x 1.65m) plus 3'2 x 2'6 (0.97m x 0.76m)

OUTSIDE

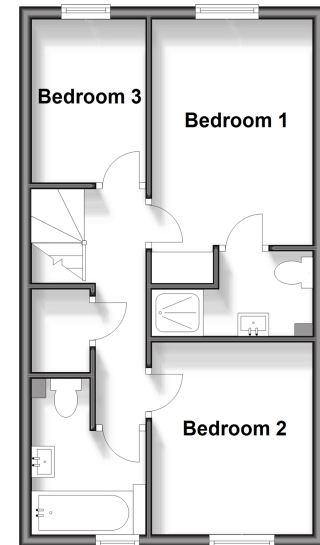
Front and Rear Gardens

Driveway

Ground Floor
Approx. 37.6 sq. metres (405.0 sq. feet)



First Floor
Approx. 37.6 sq. metres (405.0 sq. feet)



Call Bearsted - 01622 730955 ■ wardsof Kent.co.uk

- Legal advice should be taken to verify fixtures/fittings, planning, alterations and/or lease details
- Appliances & services are untested, dimensions are approximate and floor plans are not to scale
- Through a Homewise Home For Life Plan people aged 60+ can secure this property for up to 59% less, by purchasing a Lifetime Lease.



12328871/20241204/DF/DF