



OVER 60?

Secure this property
for up to **59% less!**

Price

£425,000

Freehold

3x  1x  2x 

**Eyhorne Street,
Hollingbourne,
Maidstone, Kent, ME17**

Wards
Helping you move forwards



Main features

- Picturesque semi-rural location with countryside walks on your doorstep
- Charming character features throughout
- Close proximity to train station
- Fully renovated in 2016
- Large garden perfect for entertaining

Accommodation

GROUND FLOOR

Porch: 4'1 x 3'3 (1.25m x 0.99m)
 Entrance Hall
 Dining Room: 12'1 x 9'1 (3.69m x 2.77m)
 Lounge: 13'0 x 11'1 (3.97m x 3.38m)
 Kitchen: 15'2 x 7'2 (4.63m x 2.19m)
 Utility/Cloakroom: 8'7 x 7'9 (2.62m x 2.36m)

FIRST FLOOR

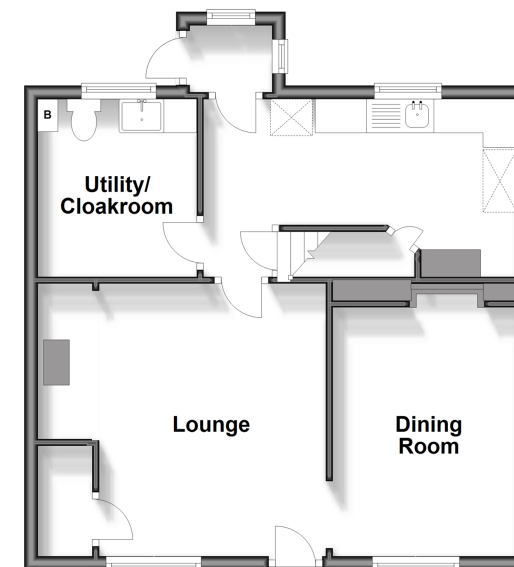
Landing
 Bedroom 1: 14'4 x 13'1 (4.37m x 3.99m)
 Bedroom 2: (L-shaped) 9'1 x 8'5 (2.77m x 2.57m) plus 4'6 x 3'9 (1.37m x 1.14m)
 Bedroom 3: 11'3 x 8'5 (3.43m x 2.57m)
 Bathroom: 11'7 x 6'8 (3.53m x 2.03m)

OUTSIDE

Front and Rear Gardens
 Outbuilding
 Storage Room

Ground Floor

Approx. 49.4 sq. metres (531.7 sq. feet)



First Floor

Approx. 46.6 sq. metres (501.8 sq. feet)



Call Bearsted - 01622 730955 ■ wardsofkent.co.uk

- If buying to let, the energy rating will need to be improved to at least 'E' rating before you can let the property
- Legal advice should be taken to verify fixtures/fittings, planning, alterations and/or lease details
- Appliances & services are untested, dimensions are approximate and floor plans are not to scale
- Through a Homewise Home For Life Plan people aged 60+ can secure this property for up to 59% less, by purchasing a Lifetime Lease.



12329008/20250716/SG/LNR