



Guide Price
£450,000

Freehold

4x  2x  1x 

**Ellis Field, Otham,
Maidstone, Kent, ME15**

OVER 60?

Secure this property
for up to **59% less!**

Wards
Helping you move forwards



Main features

- Off road parking for 2 vehicles
- En-suite shower room to largest bedroom
- Excellent sized rear garden with ample space to enjoy
- Beautiful kitchen with built in appliances with large central island
- Well presented throughout

Accommodation

GROUND FLOOR

Entrance Hall

Kitchen: 19'11 x 12'0 (6.07m x 3.66m)

Living Room: 14'4 x 12'0 (4.37m x 3.66m)

Cloakroom: 6'6 x 3'1 (1.98m x 0.94m)

FIRST FLOOR

Landing

Bedroom 1: (L-shaped) 9'9 x 9'0 (2.97m x 2.75m) plus 4'0 x 3'9 (1.22m x 1.14m)

En suite Shower Room: 7'2 x 5'1 (2.19m x 1.55m)

Bedroom 2: (L-shaped) 9'11 x 8'3 (3.02m x 2.52m) plus 4'4 x 4'1 (1.32m x 1.25m)

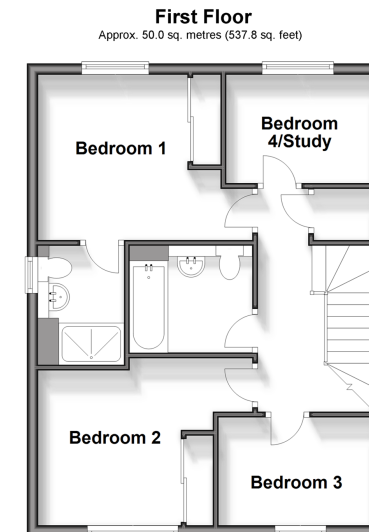
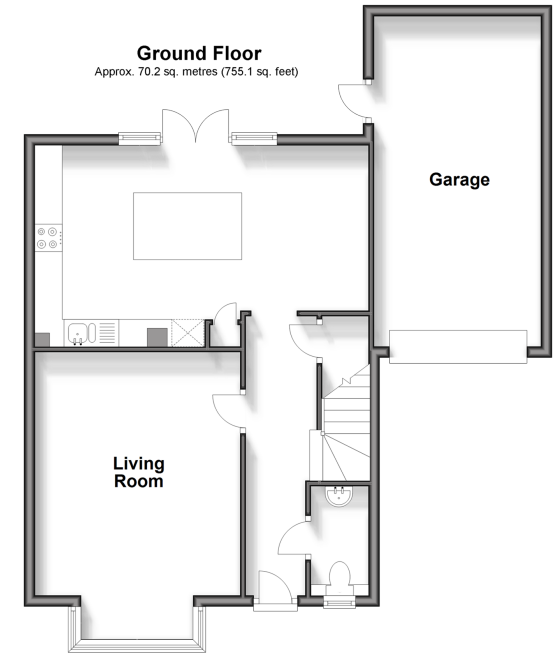
Bedroom 3: 9'2 x 6'6 (2.80m x 1.98m)

Bedroom 4/Study: 8'8 x 6'6 (2.64m x 1.98m)

OUTSIDE

Front and Rear Gardens

Garage and Driveway



Call Bearsted - 01622 730955 ■ wardsofkent.co.uk

- Legal advice should be taken to verify fixtures/fittings, planning, alterations and/or lease details
- Appliances & services are untested, dimensions are approximate and floor plans are not to scale
- Through a Homewise Home For Life Plan people aged 60+ can secure this property for up to 59% less, by purchasing a Lifetime Lease.



12329003/20241209/DF/LNR