



Guide Price
£200,000

Leasehold

1x  1x  1x 

**Ravens Dane Close,
Downswood, Maidstone,
Kent, ME15**

OVER 60?

Secure this property
for up to **59% less!**

Wards
Helping you move forwards



Main features

- Impressive corner plot garden with fish pond
- Spectacular elevated views
- Allocated off road parking adjacent to property
- Walking distance to Downwood amenities
- Manageable accommodation, ideal for those looking for little maintenance

Accommodation

GROUND FLOOR

Inner Hallway

Lounge: 10'8 x 10'3 (3.25m x 3.13m) narrowing to 6'7 x 4'9 (2.01m x 1.45m)

Kitchen: 9'11 x 5'7 (3.02m x 1.70m)

Bedroom : (L-shaped) 9'11 x 7'10 (3.02m x 2.39m) plus 1'10 x 0'11 (0.56m x 0.28m)

Bathroom: 6'2 x 4'9 (1.88m x 1.45m)

OUTSIDE

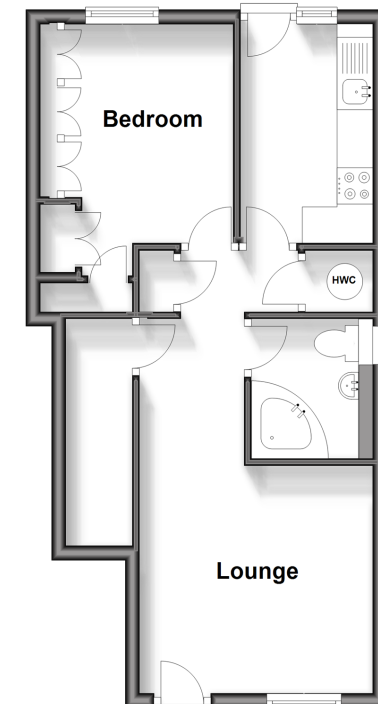
Front Garden

Rear Garden

Allocated Parking

Ground Floor

Approx. 38.9 sq. metres (418.3 sq. feet)



Call Bearsted - 01622 730955 ■ wardsofkent.co.uk

- If buying to let, the energy rating will need to be improved to at least 'E' rating before you can let the property
- Appliances & services are untested, dimensions are approximate and floor plans are not to scale

- Legal advice should be taken to verify fixtures/fittings, planning, alterations and/or lease details
- Through a Homewise Home For Life Plan people aged 60+ can secure this property for up to 59% less, by purchasing a Lifetime Lease.



12328980/20241102/SG/DF