



Price
£365,000

Freehold

3x  2x  1x 

**Latter Road, Langley,
Maidstone, Kent, ME17**

OVER 60?

Secure this property
for up to **59% less!**

Wards
Helping you move forwards



Main features

- **Good size rear garden, ideal for entertaining**
- **Close proximity to local schools ideal for pick up and drop off**
- **En-suite shower room to largest bedroom**
- **Short walk to Aldi supermarket and convenient amenities**
- **Driveway space with garage**

Accommodation

GROUND FLOOR

Hallway

Kitchen: 11'3 (3.43m) x 10'0 (3.05m) narrowing to 8'4 (2.54m)

Cloakroom: 6'3 x 3'4 (1.91m x 1.02m)

Lounge/Diner: 15'5 x 12'0 (4.70m x 3.66m)

FIRST FLOOR

Landing

Bedroom 1: (L-shaped) 9'8 x 9'3 (2.95m x 2.82m) plus 6'0 x 1'10 (1.83m x 0.56m)

En-suite Shower Room: 5'9 x 5'5 (1.75m x 1.65m)

Bedroom 2: 10'9 x 8'7 (3.28m x 2.62m)

Bedroom 3: (L-shaped) 10'9 x 6'6 (3.28m x 1.98m) plus 3'6 x 1'0 (1.07m x 0.31m)

Bathroom: 6'7 x 5'7 (2.01m x 1.70m)

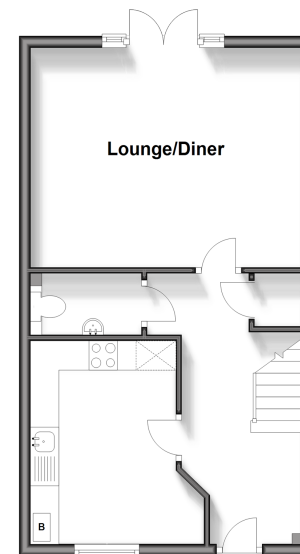
OUTSIDE

Front and Rear Gardens

Garage and Driveway

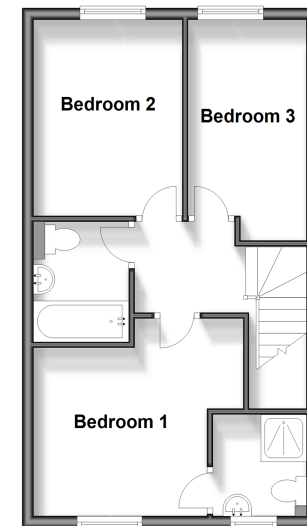
Ground Floor

Approx. 40.5 sq. metres (435.5 sq. feet)



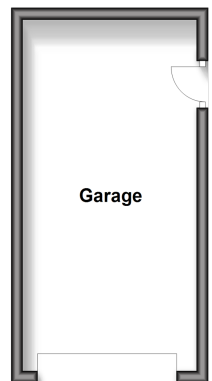
First Floor

Approx. 40.6 sq. metres (437.4 sq. feet)



Outbuilding

Approx. 18.0 sq. metres (193.7 sq. feet)



Call Bearsted - 01622 730955 ■ wardsofkent.co.uk

■ Legal advice should be taken to verify fixtures/fittings, planning, alterations and/or lease details
 ■ Through a Homewise Home For Life Plan people aged 60+ can secure this property for up to 59% less, by purchasing a Lifetime Lease.

■ Appliances & services are untested, dimensions are approximate and floor plans are not to scale



12328893/20241126/LNR/DF