



Price
£350,000

Freehold

3x  2x  1x 

**Shoebridge Drive,
Maidstone, Kent, ME17**

Wards
Helping you move forwards



Main features

- **Stunning condition throughout on fringes of development near the nature reserve**
- **Overlooking green area to the front**
- **Private garden with rear access**
- **Off road parking with additional visitors space available**
- **Easy reach of school, shops and supermarket**

Accommodation

GROUND FLOOR

Entrance Hall
 Cloakroom: 6'2 x 3'6 (1.88m x 1.07m)
 Kitchen: 11'3 x 10'0 at widest point (3.43m x 3.05m)
 Lounge/Diner: 15'6 x 11'10 (4.73m x 3.61m)

FIRST FLOOR

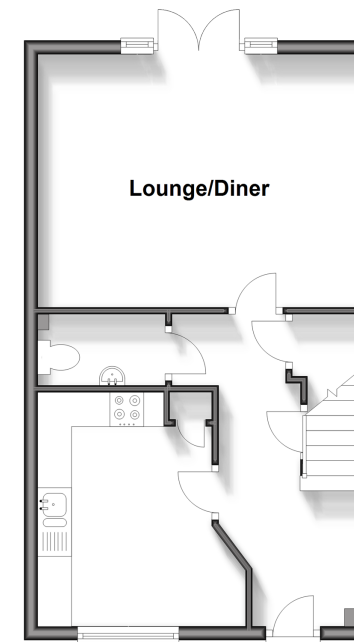
Landing
 Bedroom 1: (L-shaped) 9'8 x 9'3 (2.95m x 2.82m) plus 3'11 x 1'9 (1.19m x 0.53m)
 En-suite Shower Room: 5'9 x 5'6 (1.75m x 1.68m)
 Bedroom 2: 10'9 x 8'7 (3.28m x 2.62m)
 Bedroom 3: (L-shaped) 10'8 x 6'7 (3.25m x 2.01m) plus 3'6 x 1'4 (1.07m x 0.41m)
 Bathroom: 6'8 x 5'7 (2.03m x 1.70m)

OUTSIDE

Front and Rear Gardens
 Off Road Parking

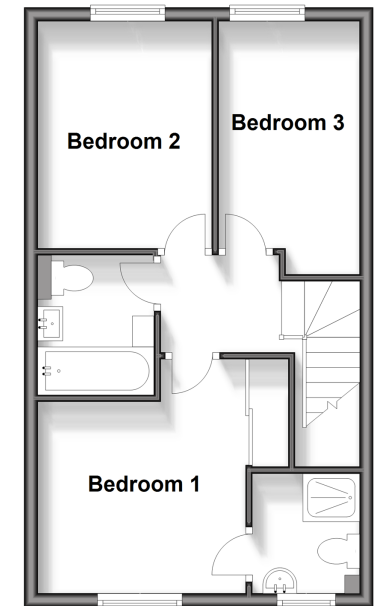
Ground Floor

Approx. 39.7 sq. metres (427.4 sq. feet)



First Floor

Approx. 39.3 sq. metres (422.5 sq. feet)



Call Bearsted - 01622 730955 ■ wardsof Kent.co.uk

■ Legal advice should be taken to verify fixtures/fittings, planning, alterations and/or lease details

■ Appliances & services are untested, dimensions are approximate and floor plans are not to scale



12328992/20241007/BM/DF