



Price
£525,000

Freehold

3x  1x  2x 

**Spot Lane, Bearsted,
Maidstone, Kent, ME15**

OVER 60?

Secure this property
for up to **59% less!**

Wards
Helping you move forwards



Main features

- **Expansively wide plot with incredible potential**
- **Stunning gardens with plenty of mature shrubs, bushes and an apple tree**
- **Exciting renovation project**
- **Short walk to Madginford & Bearsted amenities**
- **Close proximity to desirable schools**

Accommodation

GROUND FLOOR

Hallway

Lounge: 21'0 x 11'9 (6.41m x 3.58m)

Shower Room: 6'11 x 5'5 (2.11m x 1.65m)

Kitchen: 11'10 x 8'11 (3.61m x 2.72m)

Dining Room: 11'9 x 11'7 (3.58m x 3.53m)

FIRST FLOOR

Landing

Bedroom 1: 13'2 x 11'8 (4.02m x 3.56m)

Bedroom 2: (L-shaped) 10'7 x 7'8 (3.23m x 2.34m) plus 7'9 x 6'7 (2.36m x 2.01m)

Bedroom 3: (L-shaped) 9'4 x 7'5 (2.85m x 2.26m) plus 2'8 x 1'5 (0.81m x 0.43m)

Cloakroom: 6'4 x 3'3 (1.93m x 0.99m)

OUTSIDE

Garage: 15'8 x 8'2 (4.78m x 2.49m)

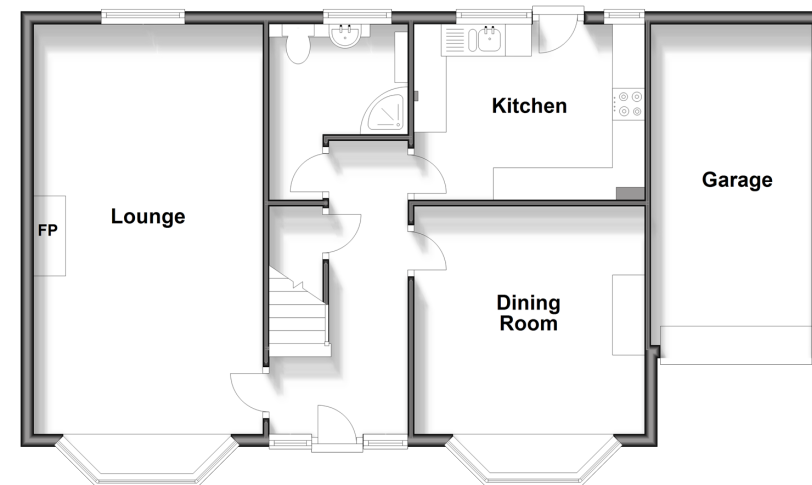
Workshop: 10'11 x 9'8 (3.33m x 2.95m)

Driveway

Front and Rear Gardens

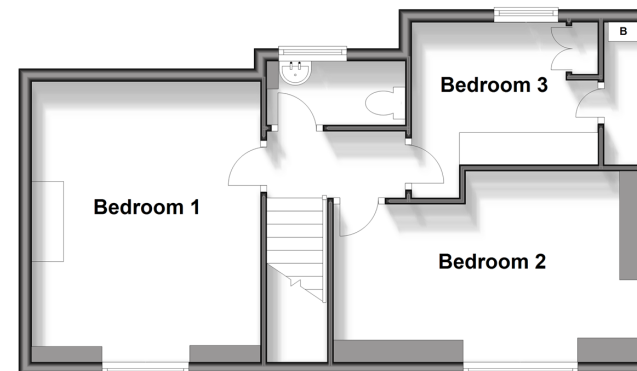
Ground Floor

Approx. 74.8 sq. metres (805.6 sq. feet)



First Floor

Approx. 45.7 sq. metres (492.4 sq. feet)



Call Bearsted - 01622 730955 ■ wardsofkent.co.uk

- Legal advice should be taken to verify fixtures/fittings, planning, alterations and/or lease details
- Appliances & services are untested, dimensions are approximate and floor plans are not to scale
- Through a Homewise Home For Life Plan people aged 60+ can secure this property for up to 59% less, by purchasing a Lifetime Lease.



12328961/20240914/SG/DF