



Price
£500,000

Freehold

5x  2x  1x 

**Edelin Road, Bearsted,
Maidstone, Kent, ME14**

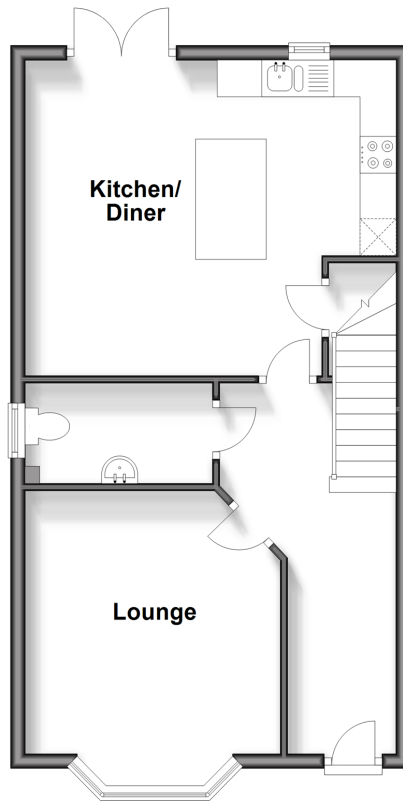
OVER 60?

Secure this property
for up to **59% less!**

Wards
Helping you move forwards

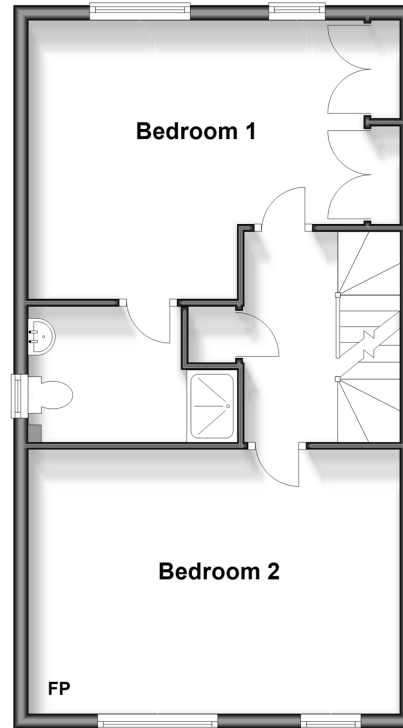
Ground Floor

Approx. 48.9 sq. metres (526.2 sq. feet)



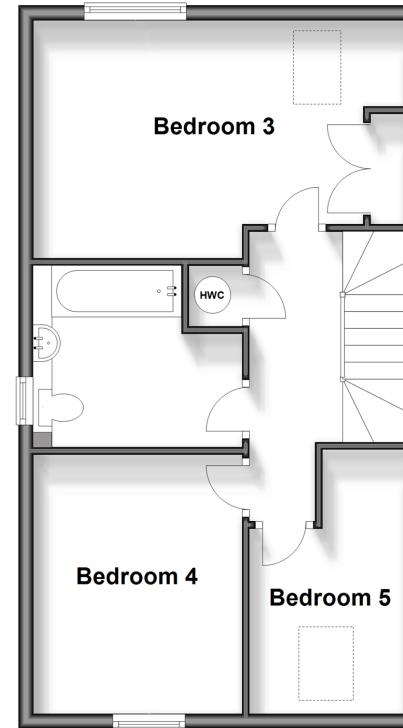
First Floor

Approx. 48.6 sq. metres (523.1 sq. feet)



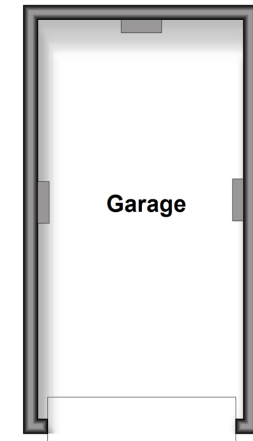
Second Floor

Approx. 48.6 sq. metres (523.1 sq. feet)



Outbuilding

Approx. 15.5 sq. metres (166.5 sq. feet)



Accommodation

GROUND FLOOR

Entrance Hall

Cloakroom: 7'11 x 4'2 (2.41m x 1.27m)

Lounge: 11'8 x 11'6 (3.56m x 3.51m)

Kitchen/Diner: (L-shaped) 14'0 x 13'7 (4.27m x 4.14m) plus 8'8 x 3'3 (2.64m x 0.99m)

FIRST FLOOR

Landing

Bedroom 1: (L-shaped) 14'9 x 9'1 (4.50m x 2.77m) plus 9'7 x 3'3 (2.92m x 0.99m)

En-suite Shower Room: (L-shaped) 6'11 x 6'2 (2.11m x 1.88m) plus 3'2 x 2'7 (0.97m x 0.79m)

Bedroom 2: 16'11 x 11'11 (5.16m x 3.63m)

SECOND FLOOR

Landing

Bedroom 3: (L-shaped) 16'11 x 9'1 (5.16m x 2.77m) plus 9'7 x 1'6 (2.92m x 0.46m)

Bedroom 4: 11'11 x 9'7 (3.63m x 2.92m)

Bedroom 5: 8'5 x 7'1 (2.57m x 2.16m) narrowing to 3'9 x 3'6 (1.14m x 1.07m)

Bathroom: (L-shaped) 7'11 x 6'8 (2.41m x 2.03m) plus 5'0 x 2'10 (1.53m x 0.86m)

OUTBUILDING

Garage: 17'9 x 9'3 (5.41m x 2.82m)

OUTSIDE

Front Garden

Rear Garden

Driveway



Main features

- Suitable for larger households with 5 bedrooms split across 2 floors
- Tastefully decorated throughout with stylish finishes
- Driveway for 2 cars with garage complete with electric rolling door
- Short walk to Bearsted Train Station and village green
- Close proximity to desirable schools



Nearest Schools

Primary Schools: Roseacre Junior School 0.8 miles, Madginford Park Junior School 1.4 miles, Maidstone, St John's C of E Primary 2.0 miles

Secondary Schools: Valley Park Community School 2.2



Transport Information

Train Stations: Bearsted 0.5 miles, Hollingbourne 2.7 miles, Maidstone East 3.0 miles



Address

Edelin Road, Bearsted, Maidstone, Kent, ME14



Directions

For directions to this property please contact us.



Wards
Helping you move forwards

Call Bearsted Branch 01622 730955 ■ wardsofkent.co.uk



- Legal advice should be taken to verify fixtures/fittings, planning, alterations and/or lease details
- Appliances & services are untested, dimensions are approximate and floor plans are not to scale
- Through a Homewise Home For Life Plan people aged 60+ can secure this property for up to 59% less, by purchasing a Lifetime Lease.

EPC RATING

CURRENT:	POTENTIAL:
C(78)	B(86)

12328978/20240930/HC/DF