



**Price**  
**£535,000**

**Freehold**

4x  2x  1x 

**Dawe Gardens, Otham,  
Maidstone, Kent, ME15**

**OVER 60?**

Secure this property  
for up to **59% less!**

*Wards*  
Helping you move forwards





## Main features

- Incredible size rear garden
- Downstairs office ideal for home working or versatile 5th bedroom for larger families
- Popular location within Otham but close to Maidstone amenities
- Double width driveway
- Impressive decor throughout with stylish features

## Accommodation

### GROUND FLOOR

Entrance Hall  
 Cloakroom: 6'0 x 3'4 (1.83m x 1.02m)  
 Office: 9'9 x 7'4 (2.97m x 2.24m)  
 Lounge: 17'11 x 11'0 (5.46m x 3.36m)  
 Kitchen/Diner: 22'11 x 9'7 (6.99m x 2.92m)  
 Utility Room: 7'0 x 5'1 (2.14m x 1.55m)

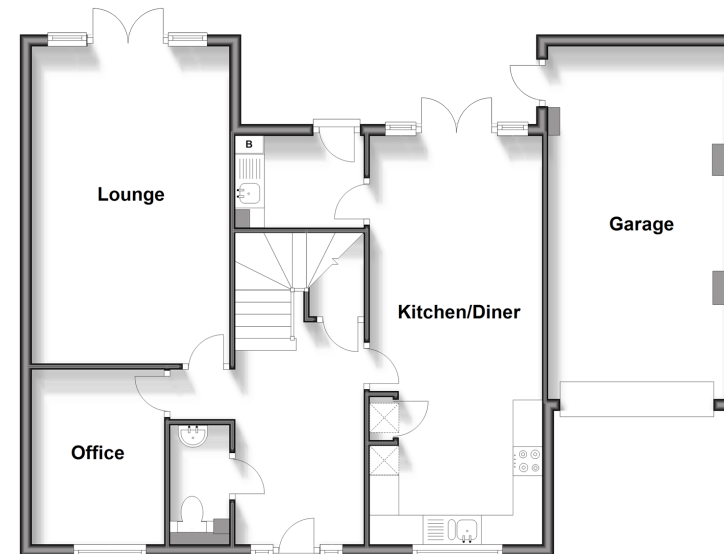
### FIRST FLOOR

Landing  
 Bedroom 1: 12'0 x 11'3 (3.66m x 3.43m)  
 En-suite Shower Room: 7'1 x 4'1 (2.16m x 1.25m)  
 Bedroom 2: 12'9 x 9'9 (3.89m x 2.97m)  
 Bedroom 3: 9'10 x 9'9 (3.00m x 2.97m)  
 Bedroom 4: 10'5 x 8'1 (3.18m x 2.47m)  
 Bathroom: (L-shaped) 7'4 x 5'7 (2.24m x 1.70m)  
 plus 2'11 x 2'6 (0.89m x 0.76m)

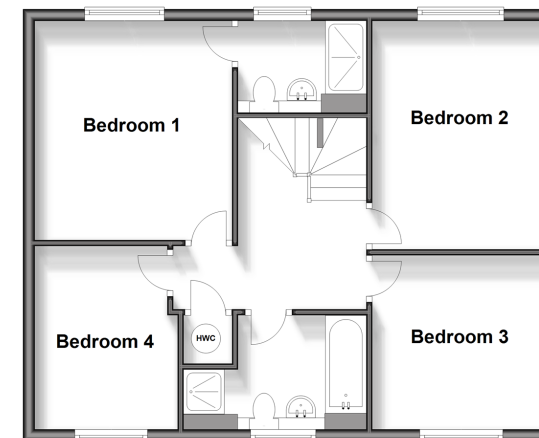
### OUTSIDE

Front and Rear Gardens  
 Garage: 19'8 x 9'11 (6.00m x 3.02m)  
 Driveway

**Ground Floor**  
 Approx. 85.1 sq. metres (916.4 sq. feet)



**First Floor**  
 Approx. 61.1 sq. metres (658.0 sq. feet)



**Call Bearsted - 01622 730955 ■ [wardsofkent.co.uk](http://wardsofkent.co.uk)**

- Legal advice should be taken to verify fixtures/fittings, planning, alterations and/or lease details
- Appliances & services are untested, dimensions are approximate and floor plans are not to scale
- Through a Homewise Home For Life Plan people aged 60+ can secure this property for up to 59% less, by purchasing a Lifetime Lease.



12328958/20241207/LNR/DF