



**Price**  
**£500,000**

**Freehold**

3x  2x  1x 

**Gascoyne Close,  
Bearsted, Maidstone,  
Kent, ME15**

**OVER 60?**

Secure this property  
for up to **59% less!**

*Wards*  
Helping you move forwards





## Main features

- Spacious outbuilding fitted with bar and air conditioning
- Good size driveway with large garage too
- En-suite wet room to main bedroom
- Popular location with close proximity to highly rated schools
- Excellent condition throughout with tasteful decorative choices

## Accommodation

### GROUND FLOOR

Entrance Hall

Lounge: 15'5 x 10'6 (4.70m x 3.20m)

Kitchen: 10'3 x 8'4 (3.13m x 2.54m)

Dining Area: 10'1 x 8'2 (3.08m x 2.49m)

Cloakroom: 6'1 x 2'7 (1.86m x 0.79m)

### FIRST FLOOR

Landing

Bedroom 1: 12'10 x 10'7 (3.91m x 3.23m)

En-suite Wet Room: 6'2 x 6'1 (1.88m x 1.86m)

Bedroom 2: 10'8 x 10'7 (3.25m x 3.23m)

Bedroom 3: (L-shaped) 9'8 x 8'5 (2.95m x 2.57m) plus 4'9 x 2'0 (1.45m x 0.61m)

Shower Room: 6'11 x 6'0 (2.11m x 1.83m)

### OUTBUILDINGS

Garage: 16'10 x 8'3 (5.13m x 2.52m)

Bar/Games Room: 15'4 x 9'6 (4.68m x 2.90m)

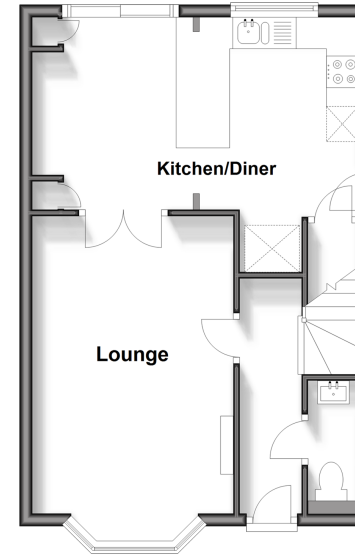
### OUTSIDE

Front and Rear Gardens

Driveway

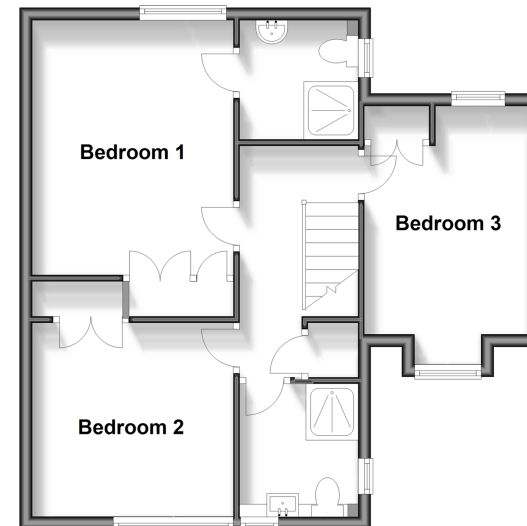
### Ground Floor

Approx. 40.6 sq. metres (437.2 sq. feet)



### First Floor

Approx. 51.0 sq. metres (549.3 sq. feet)



**Call Bearsted - 01622 730955 ■ [wardsofkent.co.uk](http://wardsofkent.co.uk)**

- Legal advice should be taken to verify fixtures/fittings, planning, alterations and/or lease details
- Appliances & services are untested, dimensions are approximate and floor plans are not to scale
- Through a Homewise Home For Life Plan people aged 60+ can secure this property for up to 59% less, by purchasing a Lifetime Lease.



12328940/20240817/SG/DF