



**OVER 60?**

Secure this property  
for up to **59% less!**

**Price**

**£600,000**

**Freehold**

3x  1x  1x 

**Nursery Avenue,  
Bearsted, Maidstone,  
Kent, ME14**

*Wards*  
Helping you move forwards



## Main features

- Fabulous corner plot with desirable garden, ideal for keen horticulturists
- Excellent size driveway with spacious garage too
- Well presented throughout and in good internal condition
- Convenient walk to Bearsted Green and amenities
- Ideal for those looking to downsize

## Accommodation

### GROUND FLOOR

Porch

Entrance Hall

Lounge: 15'6 x 13'4 (4.73m x 4.07m)

Kitchen/Diner: (L-shaped) 19'3 x 10'10 (5.87m x 3.30m) plus 8'0 x 3'9 (2.44m x 1.14m)

Conservatory: 11'9 x 9'2 (3.58m x 2.80m)

Bedroom 1: 13'6 x 12'0 (4.12m x 3.66m)

Bedroom 2: 12'3 x 10'10 (3.74m x 3.30m)

Bedroom 3: 9'4 x 8'3 (2.85m x 2.52m)

Bathroom: (L-shaped) 9'10 x 5'9 (3.00m x 1.75m) plus 2'11 x 2'9 (0.89m x 0.84m)

### OUTSIDE

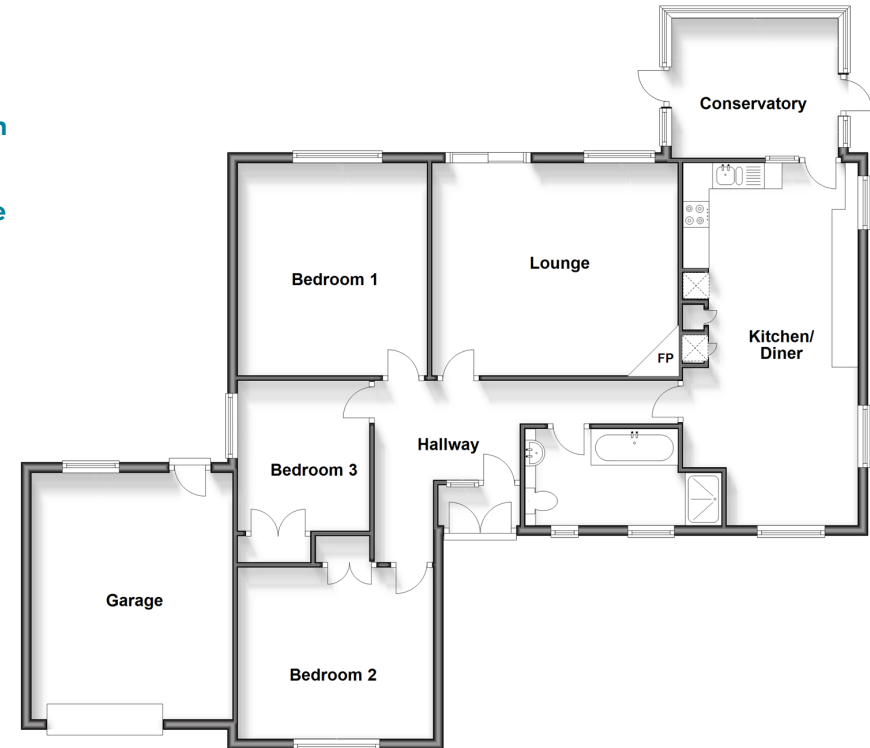
Front Garden

Rear Garden

Driveway

Garage: 16'4 x 12'8 (4.98m x 3.86m)

**Ground Floor**  
Approx. 127.2 sq. metres (1368.7 sq. feet)



**Call Bearsted - 01622 730955 ■ [wardsofkent.co.uk](http://wardsofkent.co.uk)**

- Legal advice should be taken to verify fixtures/fittings, planning, alterations and/or lease details
- Appliances & services are untested, dimensions are approximate and floor plans are not to scale
- Through a Homewise Home For Life Plan people aged 60+ can secure this property for up to 59% less, by purchasing a Lifetime Lease.



12328902/20241129/BM/DF