



**Guide Price**  
**£500,000**

**Freehold**

3x  1x  2x 

**Shirley Way, Bearsted,  
Maidstone, Kent, ME15**

**OVER 60?**

Secure this property  
for up to **59% less!**

*Wards*  
Helping you move forwards



## Main features

- Luxurious Orangery providing glorious views of your garden
- Double length, tandem garage ideal for secure car parking or storage
- Tasteful decor with attractive period features
- Comfortable distance to Madginford or Bearsted amenities
- Impressive size rear garden

## Accommodation

### SPLIT-LEVEL GROUND FLOOR

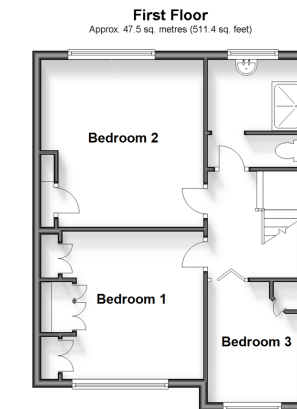
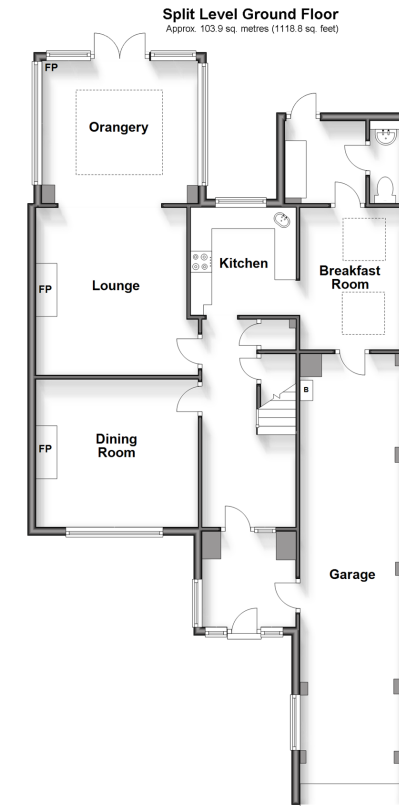
- Hallway
- Dining Room : 12'7 x 11'6 (3.84m x 3.51m)
- Kitchen : 8'2 x 7'10 (2.49m x 2.39m)
- Breakfast Room : 11'0 x 7'9 (3.36m x 2.36m)
- Utility Room : 6'6 x 6'3 (1.98m x 1.91m)
- Cloakroom: 6'4 x 2'4 (1.93m x 0.71m)
- Orangery : 12'2 x 11'1 (3.71m x 3.38m)
- Lounge: 12'11 x 11'8 (3.94m x 3.56m)

### FIRST FLOOR

- Landing
- Bedroom 1 : 11'5 x 10'7 (3.48m x 3.23m)
- Bedroom 2: 12'11 x 10'8 (3.94m x 3.25m) narrowing to 7'3 x 0'11 (2.21m x 0.28m)
- Bedroom 3 : 9'2 x 6'11 (2.80m x 2.11m)
- Shower Room: 8'4 x 7'10 (2.54m x 2.39m)

### OUTSIDE

- Driveway
- Garage: 34'2 x 8'7 (10.42m x 2.62m)
- Front Garden
- Large Rear Garden



**Call Bearsted - 01622 730955 ■ [wardsof Kent.co.uk](http://wardsof Kent.co.uk)**

- Legal advice should be taken to verify fixtures/fittings, planning, alterations and/or lease details
- Appliances & services are untested, dimensions are approximate and floor plans are not to scale
- Through a Homewise Home For Life Plan people aged 60+ can secure this property for up to 59% less, by purchasing a Lifetime Lease.



12328929/20240817/SG/DF