



Price

£190,000

2x  2x  1x 

**Franklins Avenue,
Pilgrims Retreat,
Maidstone, Kent, ME17**

Wards
Helping you move forwards



Main features

- **Idyllic rural location with picturesque views**
- **On site swimming pool, club providing community entertainment and gym**
- **En-suite shower room and walk in wardrobe to main bedroom**
- **Age restricted over 50s**
- **Spacious rear garden, much larger than anticipated**

Accommodation

GROUND FLOOR

Entrance Hall

Lounge/Diner: (L-shaped) 18'4 x 11'0 (5.59m x 3.36m) plus 9'3 x 8'2 (2.82m x 2.49m)

Bathroom: 6'6 x 6'3 (1.98m x 1.91m)

Office: 6'3 x 5'0 (1.91m x 1.53m)

Bedroom 1: 11'5 x 9'3 (3.48m x 2.82m)

Walk in Wardrobe: 6'4 x 3'7 (1.93m x 1.09m)

En-suite Shower Room: 6'4 x 5'5 (1.93m x 1.65m)

Bedroom 2: 9'4 x 9'2 (2.85m x 2.80m)

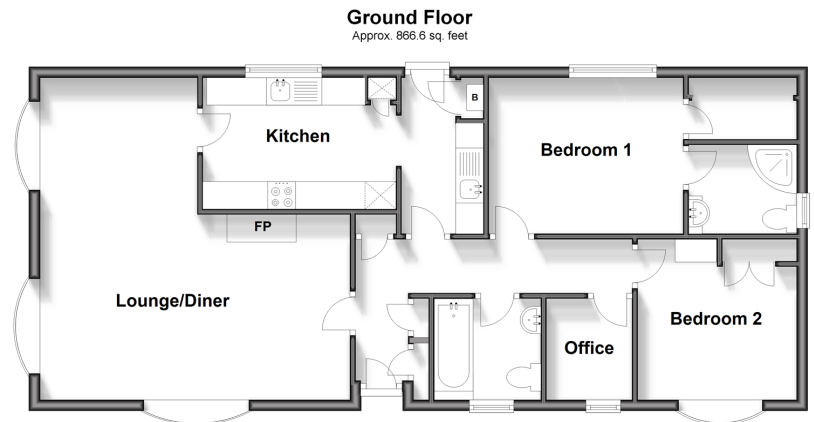
Utility Room: 9'3 x 4'10 (2.82m x 1.47m)

Kitchen: 11'5 x 7'11 (3.48m x 2.41m)

OUTSIDE

Driveway

Front and Rear Gardens



Call Bearsted - 01622 730955 ■ wardsofkennt.co.uk

■ If buying to let, the energy rating will need to be improved to at least 'E' rating before you can let the property

■ Appliances & services are untested, dimensions are approximate and floor plans are not to scale

■ Legal advice should be taken to verify fixtures/fittings, planning, alterations and/or lease details



12328925/20240727/SG/DF