

OVER 60?

Secure this property
for up to **59% less!**



Guide Price
£500,000
Freehold

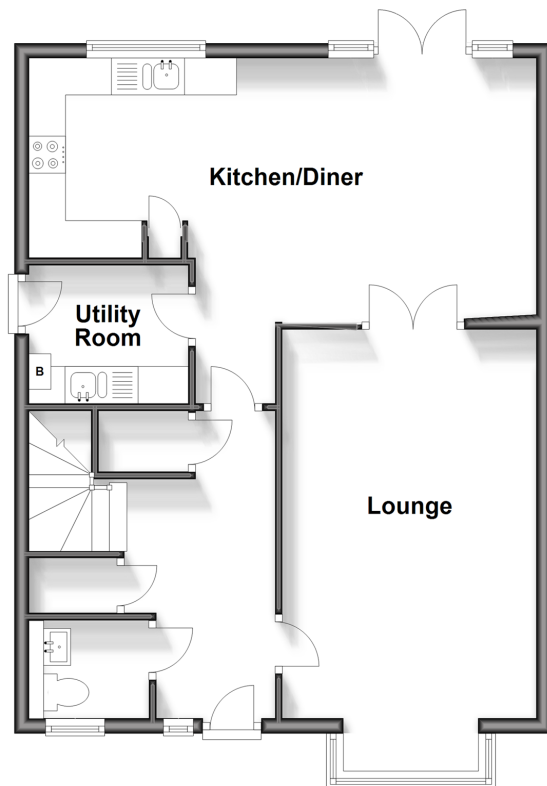
4x  2x  1x 

Mayfield, Harrietsham, Maidstone, Kent,
ME17

Wards
Helping you move forwards

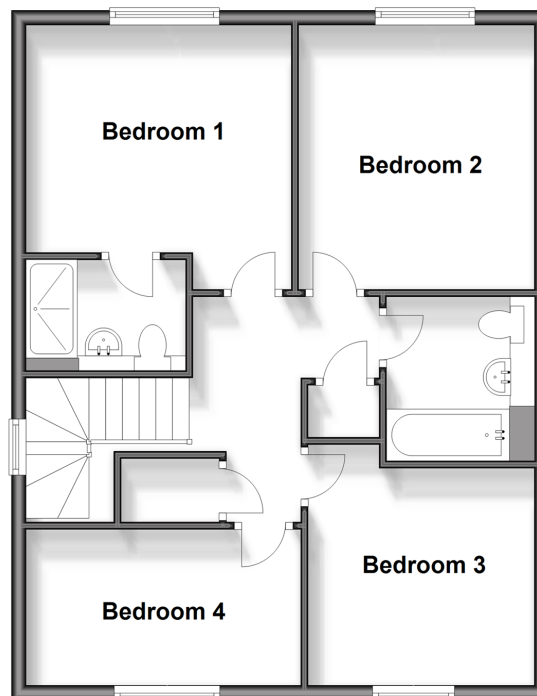
Ground Floor

Approx. 62.6 sq. metres (673.9 sq. feet)



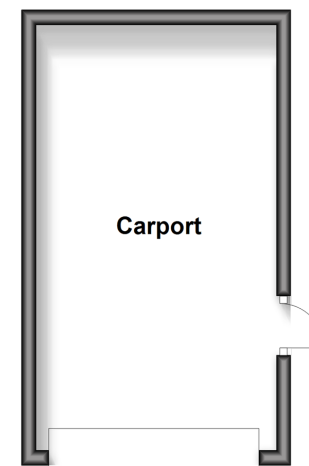
First Floor

Approx. 62.0 sq. metres (666.8 sq. feet)



Outbuilding

Approx. 19.0 sq. metres (204.4 sq. feet)



Accommodation

GROUND FLOOR

Hallway

Cloakroom: 5'5 x 4'4 (1.65m x 1.32m)

Lounge: (L-shaped) 17'11 x 11'2 (5.46m x 3.41m) plus 6'6 x 2'7 into bay (1.98m x 0.79m)

Kitchen/Diner: (L-shaped) 15'3 x 11'8 (4.65m x 3.56m) plus 8'9 x 7'7 (2.67m x 2.31m)

Utility Room: 7'3 x 6'2 (2.21m x 1.88m)

FIRST FLOOR

Landing

Bedroom 1: (L-shaped) 12'0 x 10'0 (3.66m x 3.05m) plus 4'5 x 1'8 (1.35m x 0.51m)

En-suite Shower Room: 7'4 x 4'1 (2.24m x 1.25m)

Bedroom 2: 11'7 x 10'6 (3.53m x 3.20m)

Bedroom 3: (L-shaped) 10'6 x 9'5 (3.20m x 2.87m) plus 3'7 x 1'1 (1.09m x 0.33m)

Bedroom 4: 11'11 x 7'0 (3.63m x 2.14m)

Bathroom: 7'4 x 5'6 (2.24m x 1.68m)

OUTBUILDING

Carport with electric door: 18'10 x 10'8 (5.74m x 3.25m)

OUTSIDE

Driveway

Front Garden

Rear Garden



Main features

- Low maintenance garden with plenty of entertaining space
- Newly built in 2020 with NHBC until approx. 2030
- Spacious driveway with carport and electric security shutter
- Open plan kitchen/diner with handy utility room too
- Ensuite shower room to main bedroom with great size guest rooms



Nearest Schools

Primary Schools: Harrietsham C of E Primary 0.9 miles, Lenham Primary 1.2 miles, Platts Heath Primary 1.2 miles

Secondary Schools: Swadelands School 1.2 miles, Heath Farm School 3.7 miles, Sutton Valence School 4.4 miles



Transport Information

Train Stations: Harrietsham 0.5 miles, Lenham 1.0 miles, Hollingbourne 2.7 miles



Address

Mayfield, Harrietsham, Maidstone, Kent, ME17



Directions

For directions to this property please contact us.



Call Bearsted Branch 01622 730955 ■ wardsofkent.co.uk



- Legal advice should be taken to verify fixtures/fittings, planning, alterations and/or lease details
- Appliances & services are untested, dimensions are approximate and floor plans are not to scale
- Through a Homewise Home For Life Plan people aged 60+ can secure this property for up to 59% less, by purchasing a Lifetime Lease.



12328429/20240905/SG/DF