



Price
£210,000

Leasehold

2x  2x  1x 

**Buffkyn Way,
Maidstone, Kent, ME15**

OVER 60?

Secure this property
for up to **59% less!**

Wards
Helping you move forwards



Main features

- **2 spacious double bedrooms**
- **En-suite and allocated parking**
- **Modern open plan first floor living with Juliet Balcony**
- **Close to park and communal garden area**
- **Excellent access to amenities, with shops, supermarket and bus routes positioned nearby**

Accommodation

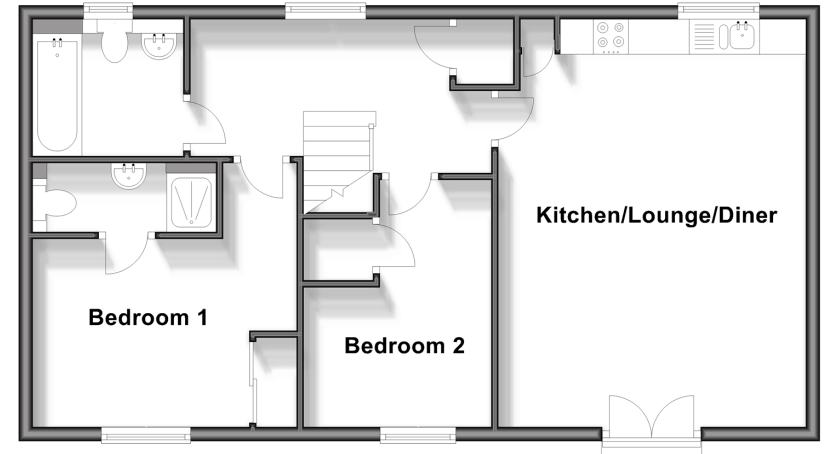
FIRST FLOOR

Entrance Hall: 14'1 x 7'6 (4.30m x 2.29m)
 Kitchen/Lounge/Diner: 19'0 x 14'5 (5.80m x 4.40m)
 Bedroom 1: 12'6 x 8'10 (3.81m x 2.69m)
 En-suite Shower Room: 8'8 x 3'2 (2.64m x 0.97m)
 Bedroom 2: 11'8 x 8'9 (3.56m x 2.67m)
 Bathroom: 7'0 x 6'4 (2.14m x 1.93m)

OUTSIDE

1 Allocated Parking Space

First Floor
 Approx. 66.5 sq. metres (716.3 sq. feet)



Call Bearsted - 01622 730955 ■ wardsofkent.co.uk

■ Legal advice should be taken to verify fixtures/fittings, planning, alterations and/or lease details
 ■ Through a Homewise Home For Life Plan people aged 60+ can secure this property for up to 59% less, by purchasing a Lifetime Lease.

■ Appliances & services are untested, dimensions are approximate and floor plans are not to scale