



**Guide Price**  
**£600,000**

**Freehold**

4x  3x  1x 

**Hampson Way,  
Bearsted, Maidstone,  
Kent, ME14**

**OVER 60?**

Secure this property  
for up to **59% less!**

*Wards*  
Helping you move forwards



## Main features

- Well extended now offering generously proportioned accommodation throughout
- Large conservatory overlooking the garden
- Stunning condition throughout
- Beautiful and private rear garden
- Double garage and plenty of off road parking

## Accommodation

### GROUND FLOOR

- Porch
- Entrance Hall
- Lounge: 16'3 x 10'10 (4.96m x 3.30m)
- Dining Room: 11'1 x 10'8 (3.38m x 3.25m)
- Kitchen: 11'4 x 8'3 (3.46m x 2.52m)
- Utility Room: 8'4 x 6'3 (2.54m x 1.91m)
- Shower Room: 5'7 x 4'5 (1.70m x 1.35m)
- Conservatory: 17'5 x 12'7 (5.31m x 3.84m)

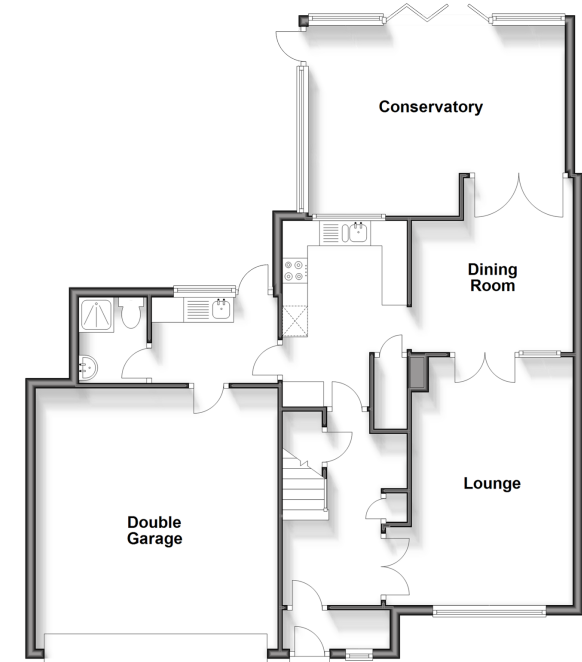
### FIRST FLOOR

- Landing
- Bedroom 1: 13'2 x 12'9 (4.02m x 3.89m)
- En-suite Shower Room: 7'10 x 6'2 (2.39m x 1.88m)
- Bedroom 2: 13'5 x 13'1 (4.09m x 3.99m)
- Bedroom 3: 11'0 x 10'11 (3.36m x 3.33m)
- Bedroom 4/Study: 8'5 x 8'1 (2.57m x 2.47m)
- Bathroom: 7'11 x 5'6 (2.41m x 1.68m)

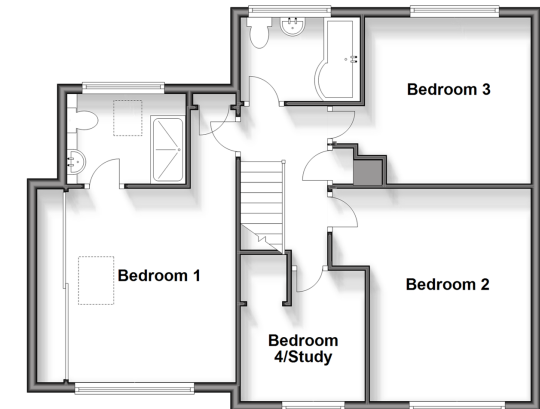
### OUTSIDE

- Front and Rear Gardens
- Double Garage: 17'4 x 16'0 (5.29m x 4.88m)
- Off Road Parking

**Ground Floor**  
Approx. 100.3 sq. metres (1079.5 sq. feet)



**First Floor**  
Approx. 66.7 sq. metres (718.5 sq. feet)



**Call Bearsted - 01622 730955 ■ [wardsof Kent.co.uk](http://wardsof Kent.co.uk)**

- Legal advice should be taken to verify fixtures/fittings, planning, alterations and/or lease details
- Appliances & services are untested, dimensions are approximate and floor plans are not to scale
- Through a Homewise Home For Life Plan people aged 60+ can secure this property for up to 59% less, by purchasing a Lifetime Lease.



12328776/20241019/SG/MC